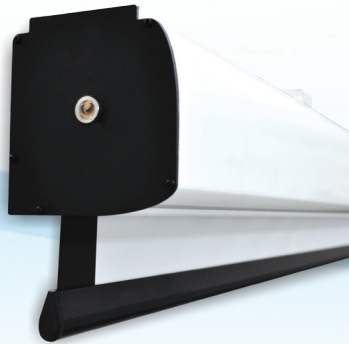


The **MAJOR** screen has the same features of the Compact model but guarantees high quality images on big dimensions. The sizes of this screen make it a very good solution for medium or big rooms that need to be used for projections to a large audience.

Available in different sizes, ratios or customized sizes and can be equipped with different types of fabric for high quality projections.



**MAJOR WITH THREE BLACK BORDERS**

- Silent motor system provides a smooth and quiet operation
- Totally manufactured in aluminium
- Smart design and easy to install
- Housing dimensions: 124x133 mm.
- Housing painted with white epoxy powders (RAL 9010)
- Four universal mounting brackets either for ceiling or for wall\*
- Switcher on/off included
- Projection fabrics are flame-retardant - classification M1 and M2
- White counterweight 38 mm. high\*\*
- Side black borders of 5 cm. on request
- **AVAILABLE ACCESSORIES:** RF remote control with integrated or external receiver, False ceiling Trim Kit, Interface switch 12 Volt, Wall extension brackets

\*Major 300x300 is supplied with two universal mounting brackets.

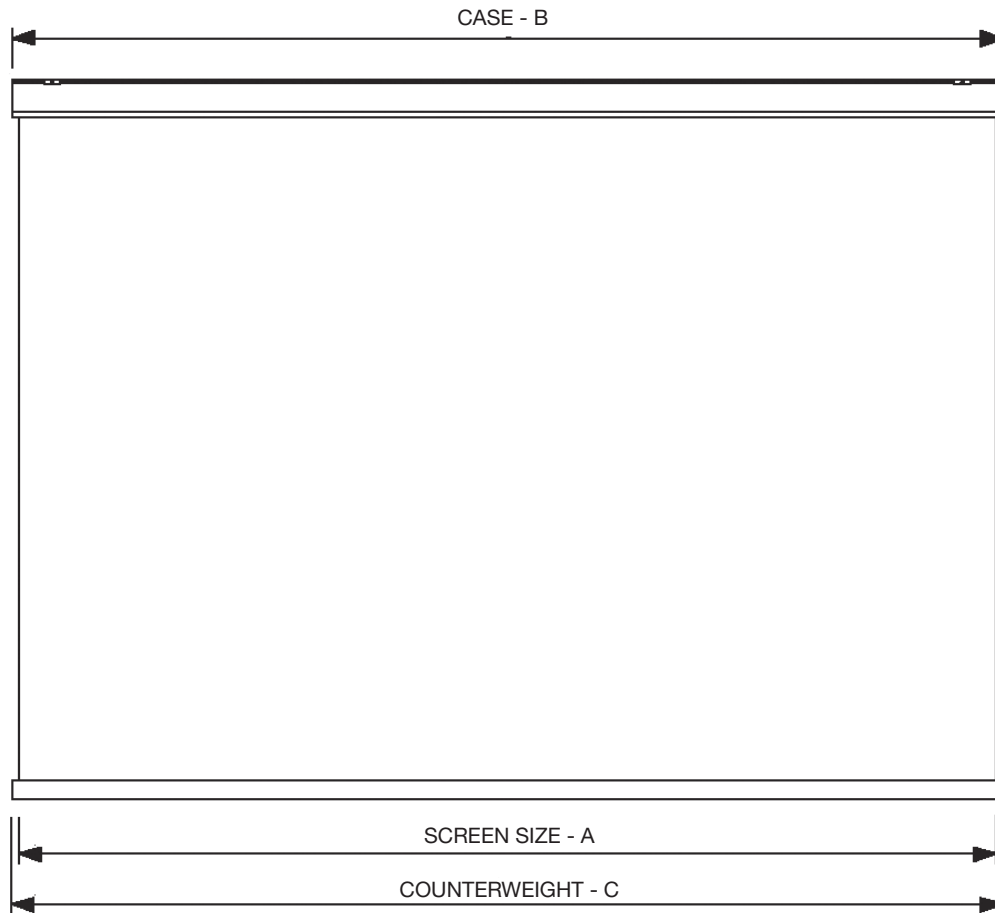
\*\* On screens with black borders and on Major 450x340, the counterbar is black and 35 mm. high.

### TECHNICAL DETAILS

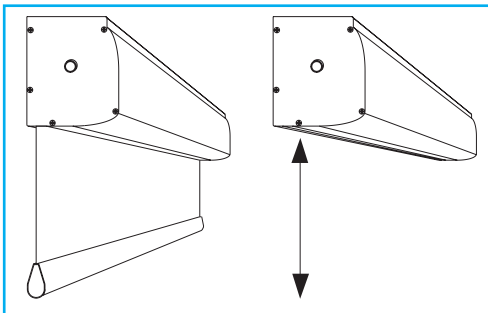
1:1 Ratio Viewing area (WxH) (A)	4:3 Ratio Viewing area (WxH) (A)	Overall dimensions	Front projection surfaces	Rear projection surfaces	Approx. net weight
cm. 300x300 cm. 350x350 cm. 400x400	cm. 350x265 cm. 400x300 cm. 450x340	B cm. 311 C cm. 304 B cm. 361 C cm. 354 B cm. 411 C cm. 404 B cm. 461 C cm. 454	White gain 1.2 Matte White gain 1.2 Microperforated gain 1.1 FrontRear gain 0.9	Rear Plus gain 1.1 FrontRear gain 0.9	Kg. 21 Kg. 30 Kg. 33 Kg. 36

Warranty: 5 years on the motor - 24 months on the other components

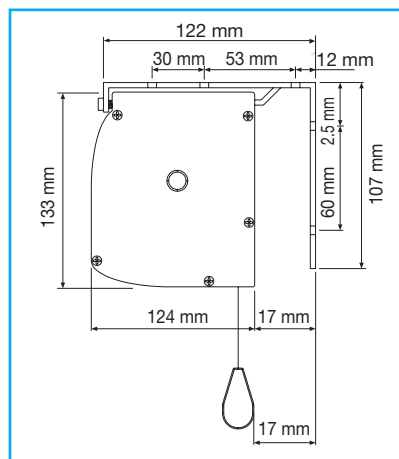
# TECHNICAL SPECIFICATIONS



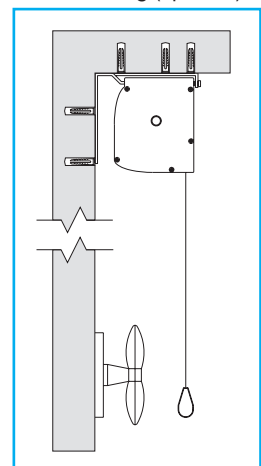
Concealing counterweight



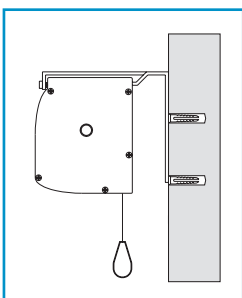
Cabinet dimensions



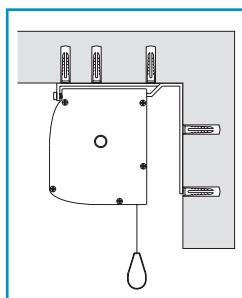
Cloth drops on the front side of the housing (optional)



Wall Mounting



Ceiling Mounting



## Motor characteristics

- Power: 10 Nm
- Speed: 17 rpm
- Power supply: 230V / 50 Hz
- Consumption: 156 W
- Certification: IMQ

Euroscreen S.r.l.  
Via Stiria, 45/16 - 33100 Udine - Italy  
Tel. +39 0432 522755  
Fax +39 0432 524000  
www.screenint.com  
info@screenint.com

