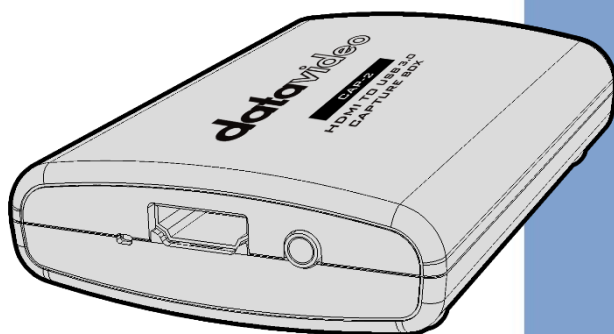


# datavideo



**HDMI TO USB 3.0  
CAPTURE BOX  
CAP-2**

## **Instruction Manual**

[www.datavideo.com](http://www.datavideo.com)

# Table of Contents

<b>TABLE OF CONTENTS</b> .....	<b>2</b>
<b>FCC COMPLIANCE STATEMENT</b> .....	<b>4</b>
<b>WARNINGS AND PRECAUTIONS</b> .....	<b>4</b>
<b>WARRANTY</b> .....	<b>6</b>
<i>STANDARD WARRANTY</i> .....	<b>6</b>
<i>THREE YEAR WARRANTY</i> .....	<b>6</b>
<b>DISPOSAL</b> .....	<b>7</b>
<b>1. PRODUCT OVERVIEW</b> .....	<b>8</b>
1.1 FEATURES .....	<b>8</b>
1.2 SYSTEM DIAGRAM .....	<b>9</b>
<b>2. CONNECTIONS AND CONTROL</b> .....	<b>10</b>
2.1 FRONT PANEL .....	<b>10</b>
2.2 REAR PANEL .....	<b>11</b>
<b>3. BASIC SETUP</b> .....	<b>12</b>
3.1 HOW TO CONNECT YOUR CAP-2 .....	<b>12</b>
<b>4. OBS STREAMING SOFTWARE</b> .....	<b>13</b>
4.1 HOW TO INSTALL THE OBS STREAMING SOFTWARE .....	<b>13</b>
4.2 HOW TO SET THE VIDEO AND AUDIO OF THE OBS STREAMING SOFTWARE .....	<b>19</b>
<b>5. CAP-2 COMPATIBILITY TABLE FOR THIRD-PARTY SOFTWARES</b> .....	<b>30</b>
<b>6. FIRMWARE UPDATE</b> .....	<b>31</b>
<b>7. DIMENSIONS</b> .....	<b>39</b>
<b>8. FREQUENTLY-ASKED QUESTIONS</b> .....	<b>40</b>
<b>9. SPECIFICATIONS</b> .....	<b>46</b>
<b>SERVICE AND SUPPORT</b> .....	<b>48</b>

**Disclaimer of Product and Services**

The information offered in this instruction manual is intended as a guide only. At all times, Datavideo Technologies will try to give correct, complete and suitable information. However, Datavideo Technologies cannot exclude that some information in this manual, from time to time, may not be correct or may be incomplete. This manual may contain typing errors, omissions or incorrect information. Datavideo Technologies always recommend that you double check the information in this document for accuracy before making any purchase decision or using the product. Datavideo Technologies is not responsible for any omissions or errors, or for any subsequent loss or damage caused by using the information contained within this manual. Further advice on the content of this manual or on the product can be obtained by contacting your local Datavideo Office or dealer.

## **FCC Compliance Statement**

This device complies with part 15 of the FCC rules. Operation is subject to the following two conditions:

- (1) This device may not cause harmful interference, and
- (2) This device must accept any interference received, including interference that may cause undesired operation.

## **Warnings and Precautions**

1. Read all of these warnings and save them for later reference.
2. Follow all warnings and instructions marked on this unit.
3. Unplug this unit from the wall outlet before cleaning. Do not use liquid or aerosol cleaners. Use a damp cloth for cleaning.
4. Do not use this unit in or near water.
5. Do not place this unit on an unstable cart, stand, or table. The unit may fall, causing serious damage.
6. Slots and openings on the cabinet top, back, and bottom are provided for ventilation. To ensure safe and reliable operation of this unit, and to protect it from overheating, do not block or cover these openings. Do not place this unit on a bed, sofa, rug, or similar surface, as the ventilation openings on the bottom of the cabinet will be blocked. This unit should never be placed near or over a heat register or radiator. This unit should not be placed in a built-in installation unless proper ventilation is provided.
7. This product should only be operated from the type of power source indicated on the marking label of the AC adapter. If you are not sure of the type of power available, consult your Datavideo dealer or your local power company.
8. Do not allow anything to rest on the power cord. Do not locate this unit where the power cord will be walked on, rolled over, or otherwise stressed.
9. If an extension cord must be used with this unit, make sure that the total of the ampere ratings on the products plugged into the extension cord do not exceed the extension cord's rating.
10. Make sure that the total amperes of all the units that are plugged into a single wall outlet do not exceed 15 amperes.
11. Never push objects of any kind into this unit through the cabinet ventilation slots, as they may touch dangerous voltage points or short out parts that could result in risk of fire or electric shock. Never spill liquid of any kind onto or into this unit.
12. Except as specifically explained elsewhere in this manual, do not attempt to service this product yourself. Opening or removing covers may expose you to dangerous voltage points or other risks, and will void your warranty. Refer all service issues to qualified service personnel.
13. Unplug this product from the wall outlet and refer to qualified service personnel under the following conditions:

- a. When the power cord is damaged or frayed;
- b. When liquid has spilled into the unit;
- c. When the product has been exposed to rain or water;
- d. When the product does not operate normally under normal operating conditions. Adjust only those controls that are covered by the operating instructions in this manual; improper adjustment of other controls may result in damage to the unit and may often require extensive work by a qualified technician to restore the unit to normal operation;
- e. When the product has been dropped or the cabinet has been damaged;
- f. When the product exhibits a distinct change in performance, indicating a need for service.

# Warranty

## *Standard Warranty*

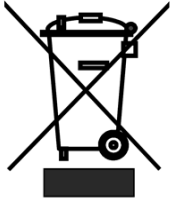
- Datavideo equipment are guaranteed against any manufacturing defects for one year from the date of purchase.
- The original purchase invoice or other documentary evidence should be supplied at the time of any request for repair under warranty.
- The product warranty period begins on the purchase date. If the purchase date is unknown, the product warranty period begins on the thirtieth day after shipment from a Datavideo office.
- All non-Datavideo manufactured products (product without Datavideo logo) have only one year warranty from the date of purchase.
- Damage caused by accident, misuse, unauthorized repairs, sand, grit or water is not covered under warranty.
- Viruses and malware infections on the computer systems are not covered under warranty.
- Any errors that are caused by unauthorized third-party software installations, which are not required by our computer systems, are not covered under warranty.
- All mail or transportation costs including insurance are at the expense of the owner.
- All other claims of any nature are not covered.
- All accessories including headphones, cables, and batteries are not covered under warranty.
- Warranty only valid in the country or region of purchase.
- Your statutory rights are not affected.

## *Three Year Warranty*

- All Datavideo products purchased after July 1st, 2017 are qualified for a free two years extension to the standard warranty, providing the product is registered with Datavideo within 30 days of purchase.
- Certain parts with limited lifetime expectancy such as LCD panels, DVD drives, Hard Drive, Solid State Drive, SD Card, USB Thumb Drive, Lighting, Camera module, PCIe Card are covered for 1 year.
- The three-year warranty must be registered on Datavideo's official website or with your local Datavideo office or one of its authorized distributors within 30 days of purchase.



# Disposal



## For EU Customers only - WEEE Marking

This symbol on the product or on its packaging indicates that this product must not be disposed of with your other household waste. Instead, it is your responsibility to dispose of your waste equipment by handing it over to a designated collection point for the recycling of waste electrical and electronic equipment. The separate collection and recycling of your waste equipment at the time of

disposal will help to conserve natural resources and ensure that it is recycled in a manner that protects human health and the environment. For more information about where you can drop off your waste equipment for recycling, please contact your local city office, your household waste disposal service or the shop where you purchased the product.



**CE Marking** is the symbol as shown on the left of this page. The letters "CE" are the abbreviation of French phrase "Conformité Européene" which literally means "European Conformity". The term initially used was "EC Mark" and it was officially replaced by "CE Marking" in the Directive 93/68/EEC in 1993. "CE Marking" is now used in all EU official documents.

# 1. Product Overview

Datavideo CAP-2 is an HDMI to USB 3.0 Capture Box for supporting fast capturing up to 1080p50/60 input video resolution. Moreover, it supports plug & play operation. Datavideo CAP-2 supports many OS platforms. Moreover, it provides AUDIO IN interface for connecting external connected AUDIO IN source. Furthermore, the CAP-2 provides AUDIO SWITCH/AUDIO IN EMBED audio source toggle switch for users to select for different audio source. The embedded audio source or the external connected Audio in source can be used for the audio source of the CAP-2. It gives higher flexibility for CAP-2 compared to general UVC devices.

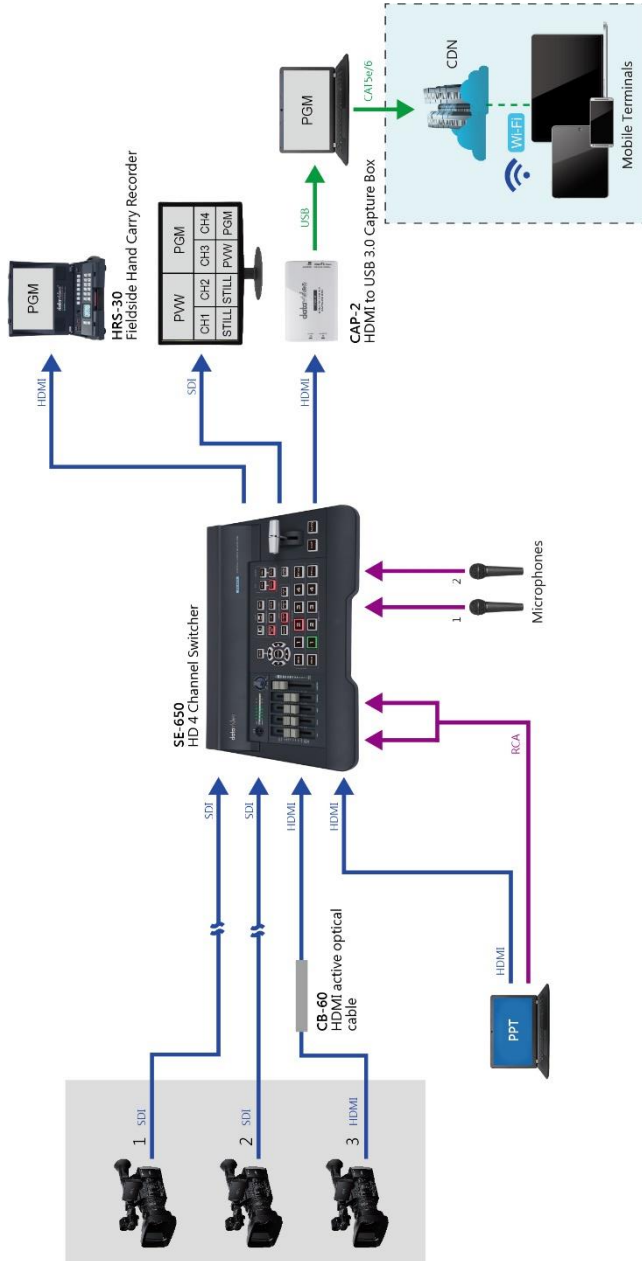
## 1.1 Features

### Big Five Features

- Supports USB 3.0
- Video Input Interface: HDMI x 1
- Supports up to 1080p60 video streaming through the USB 3.0 interface.
- Supports HDMI 1.4 Protocol Audio and Video Capturing
- Supports Plug & Play Operation with Automatic Video Format Detection Capability.






# 1.2 System Diagram



## 2. Connections and Control




### 2.1 Front Panel



	<p><b>Micro USB 3.0 OUT(Second Generation)</b></p> <p>Please connect a micro USB 3.0 Type B to USB 3.0 Type A adapter cable from this interface to the USB 3.0 interface of your laptop or PC.</p> <p><b>Note: Please use the Micro USB 3.0 cable which is bundled in the CAP-2.</b></p>
	<p><b>USB 3.0 OUT (First Generation)</b></p> <p>Please connect this port to the USB 3.0 interface of your Notebook PC or PC by using a USB 3.0 cable.</p> <p><b>Note: Please use the USB 3.0 cable which is bundled in the CAP-2.</b></p>
	<p><b>AUDIO SWITCH(AUDIO IN/EMBED)</b></p> <p>This toggle switch allows users to select their desired audio source for streaming. Pull the toggle switch to the left side for selecting the AUDIO IN external connected audio source to the the streaming audio source. Pull the toggle switch to the right side for selecting the HDMI IN embedded audio source to be the streaming audio source.</p>

## 2.2 Rear Panel



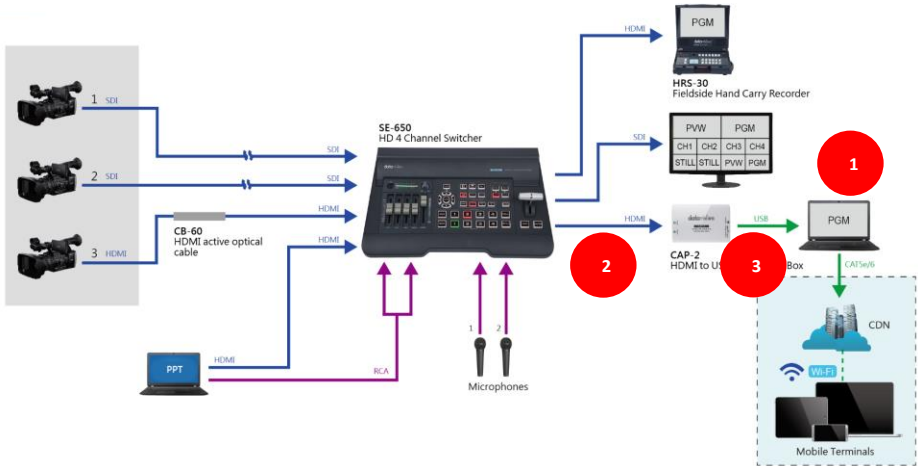
	<b>LED Indicator</b> This is the LED indicator for the input signal.
	<b>HDMI IN</b> Please connect this port to an HDMI input source.
	<b>AUDIO IN</b> Please connect to an external connected audio source with 3.5mm analog stereo audio plug.

### 3. Basic Setup

This chapter will show users how to connect the CAP-2 HDMI to USB 3.0 Capture Box.

#### 3.1 How to Connect Your CAP-2

Please follow following steps for connecting your CAP-2 to an HDMI video source and a Notebook PC.



1. Please turn on the power of your Notebook PC.
2. Please connect your HDMI video source (Cameras, etc.) to the HDMI interface of the CAP-2 by using an HDMI cable. In this case, the Datavideo SE-650 is used as an example.
3. Please connect from the USB 3.0 OUT interface of the CAP-2 to the USB 3.0 interface of your Notebook PC by using a Micro USB-B to USB-A (2<sup>nd</sup> Generation) or an USB-A to USB-A (1<sup>st</sup> Generation) cable.

## 4. OBS Streaming Software

The Datavideo CAP-2 HDMI to USB 3.0 Capture Box allows users to capture the HDMI input source and then to convert this input source by a USB 3.0 interface to be an input source for the Notebook PC. After that, users can stream the input source to many mainstream streaming platforms such as Youtube and Facebook by using OBS or Xsplit Broadcaster streaming software. This chapter will show you how to install and set the streaming software by using OBS as an example.

Windows OS Platform: For Windows platform user, it is recommended to use the OBS streaming software for streaming. Please download the OBS software from following website and then please install the software.

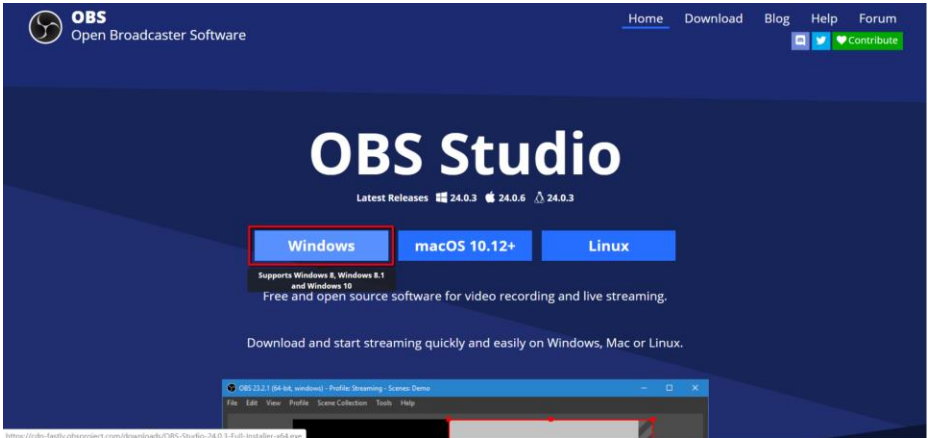
OBS : <https://obsproject.com/>

### 4.1 How to Install the OBS Streaming Software

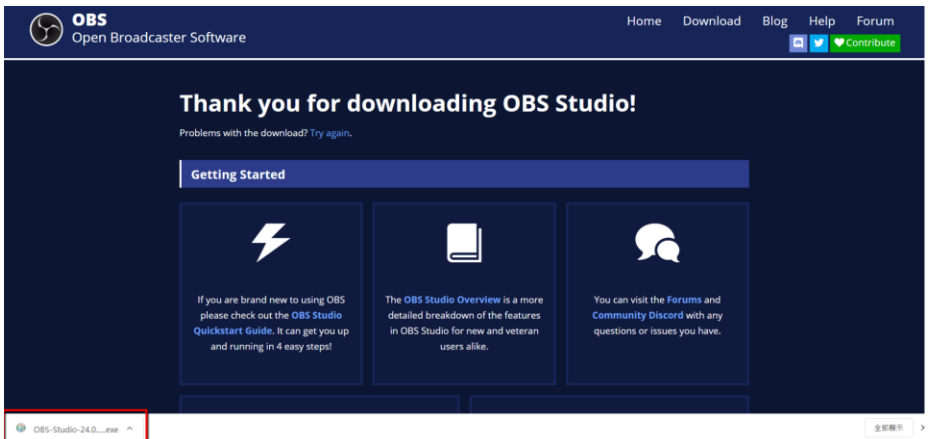
Please follow following steps for installing the OBS streaming software. This chapter take Windows platform as an example. The following example will take OBS Studio 24.0.3 (64bit) version as an example.



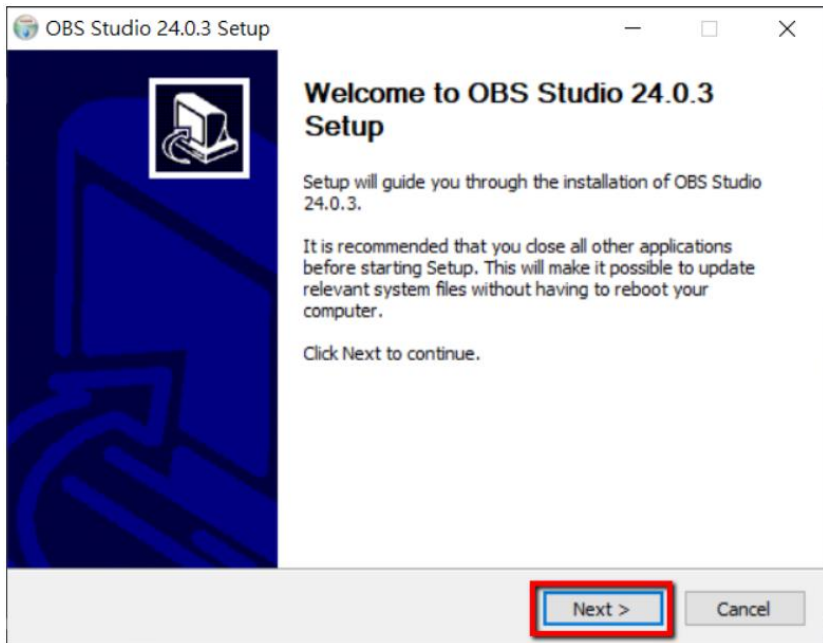
1. Please visit the OBS website <https://obsproject.com/> and then please click the “Windows” button for downloading the OBS software.



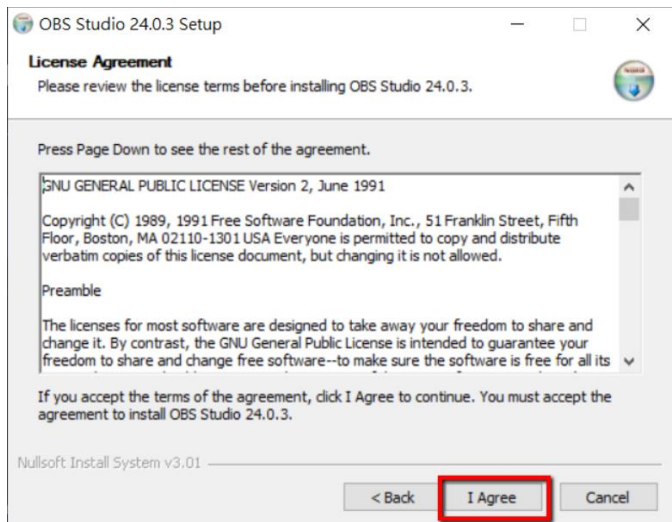
2. Please click the area with the red rectangular for installing the OBS software.



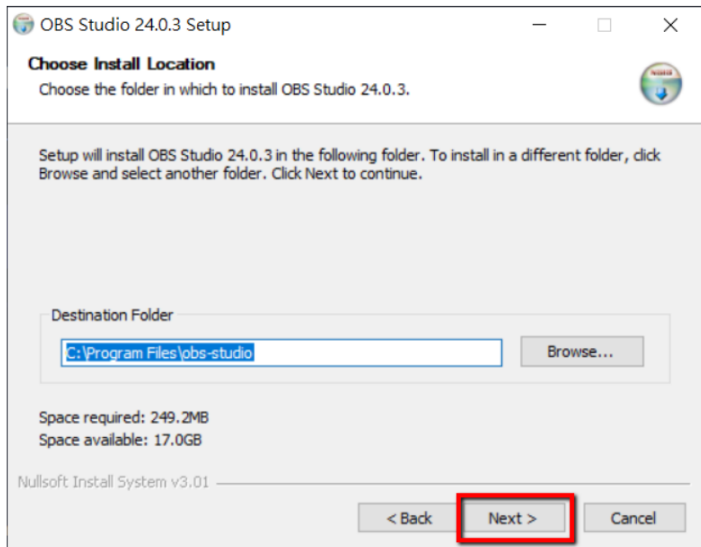
3. Please press the “Next” button for starting the installation.



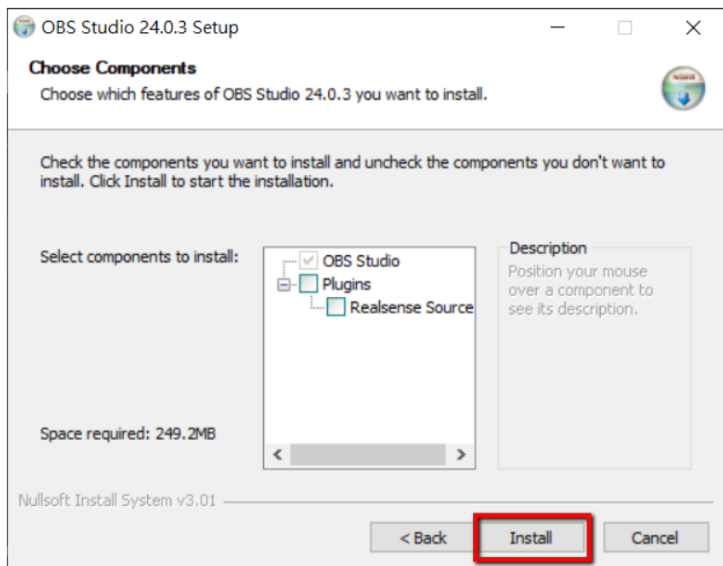
4. Please press the “I Agree” button.



5. Please press the “Next” button.

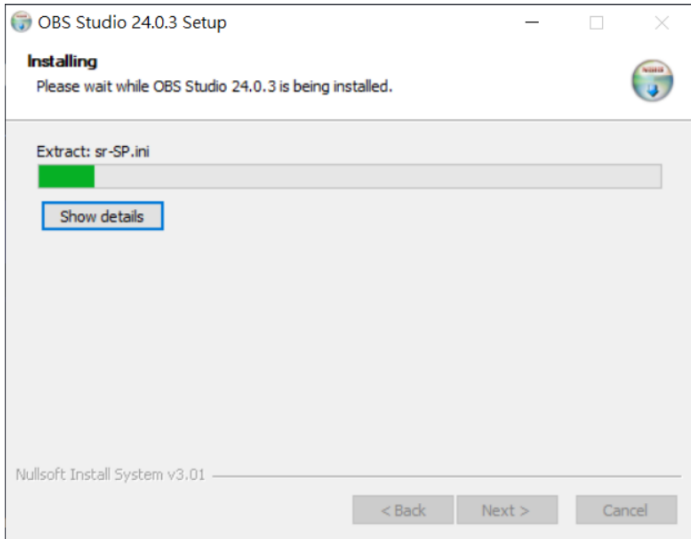


6. Please press the “Install” button.

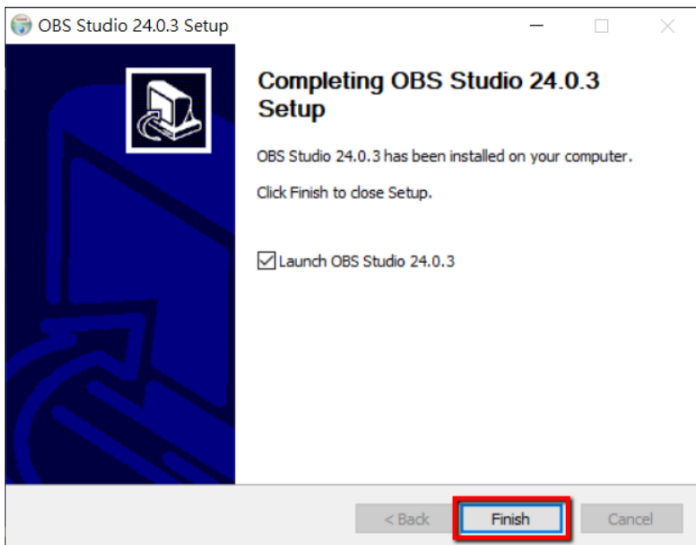




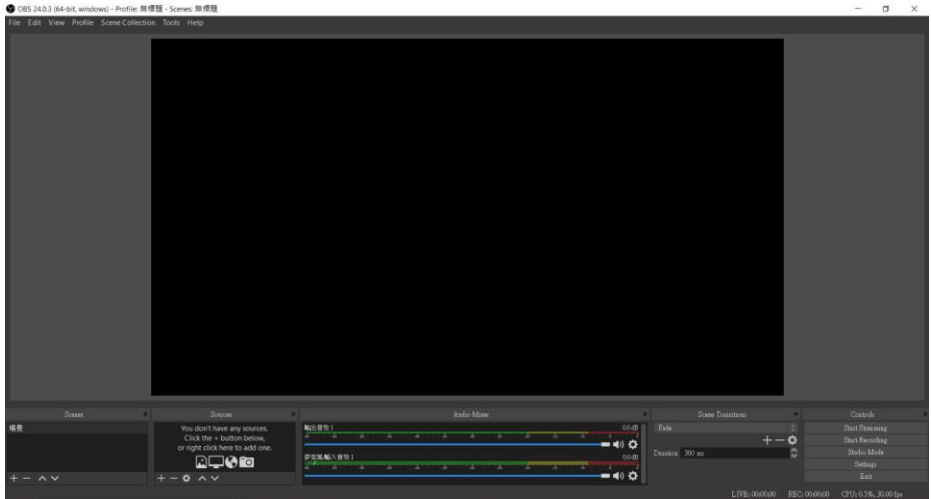
7. Users can see that the installation of the OBS software is started.



8. Please press the “Finish” button for completing the installation.



9. After the installation is finished, users can see the main interface of the software which is shown as following diagram.

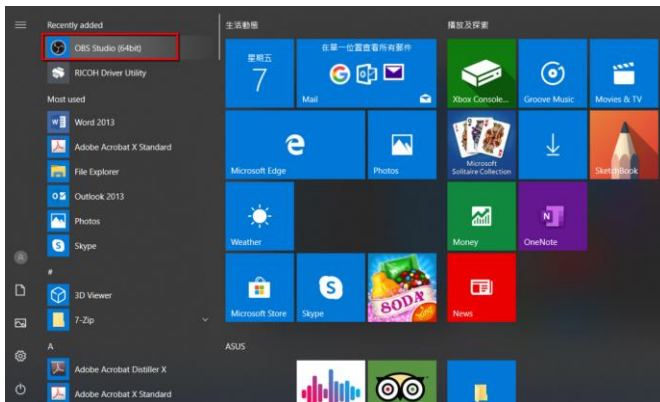


## 4.2 How to Set the Video and Audio of the OBS Streaming Software

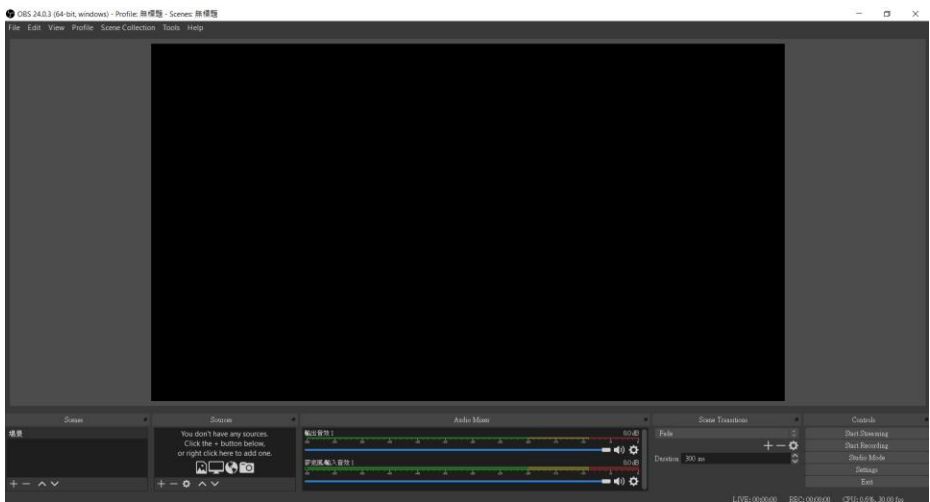
Please follow following steps for setting the video and audio of the OBS streaming software.


### Video Setup

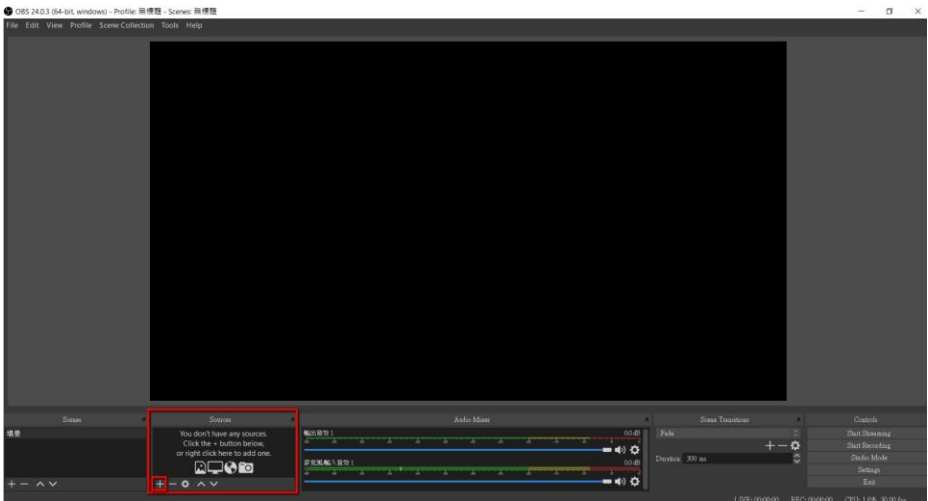
1. At first, please click the OBS icon for opening the OBS software.



2. Users can see the main interface of the OBS software.

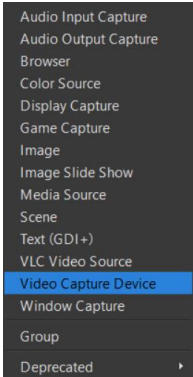


3. Please press the “Add” button  from the “Source” pane to open the “Source” menu.

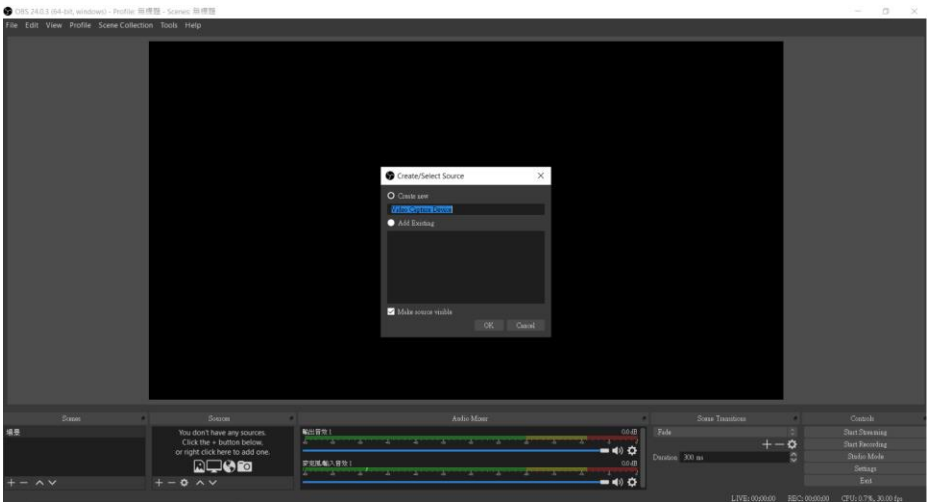


- Audio Input Capture
- Audio Output Capture
- Browser
- Color Source
- Display Capture
- Game Capture
- Image
- Image Slide Show
- Media Source
- Scene
- Text (GDI+)
- VLC Video Source
- Video Capture Device
- Window Capture
- Group
- Deprecated

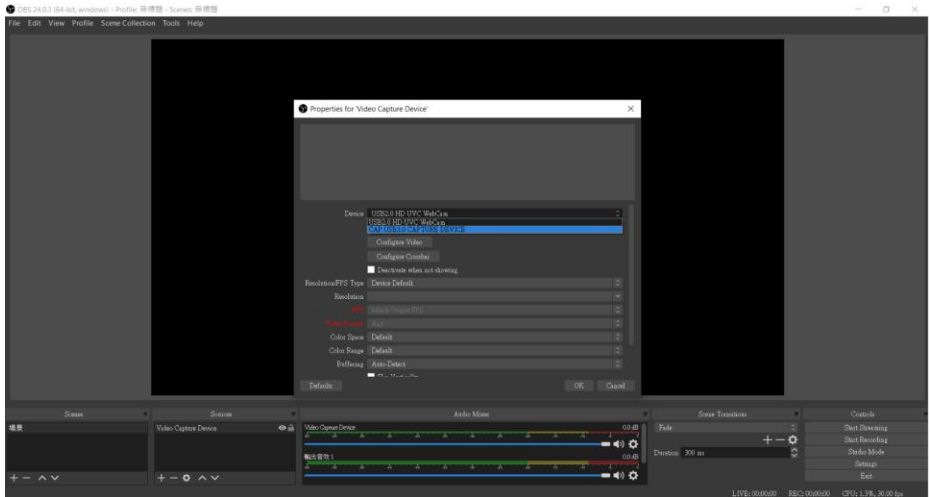
#### 4. Please select “Video Capture Device” option.



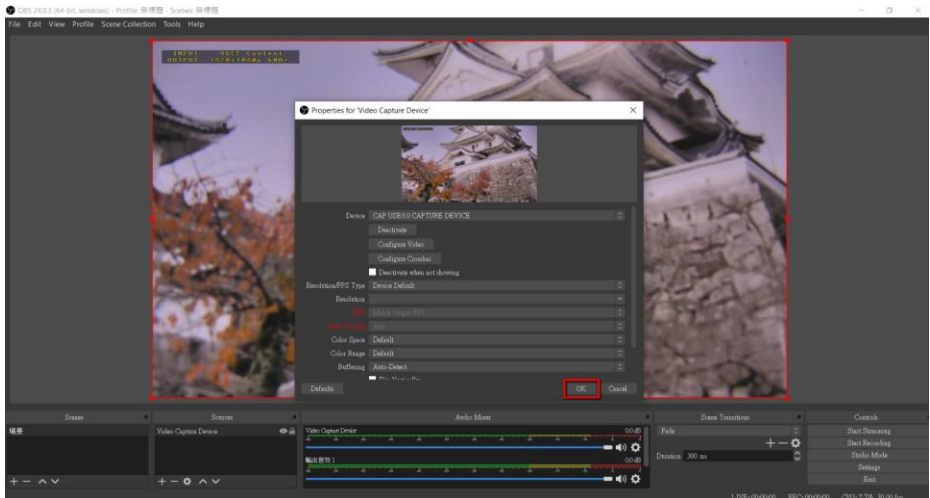
#### 5. There is a “Create/Select Source” popup window that will be shown for users to name the video source. Please press the “OK” button. It is recommended that the “Make source visible” checkbox must be checked.



6. There is a “Properties for ‘Video Capture Device’” popup window that will be shown. Please select “CAP USB3.0 CAPTURE DEVICE”, which is the CAP-2, from the “Device” drop-down menu to be the streaming video capturing device.



7. After the device is selected, users can see the captured screen which is shown as following diagram. Please press the “OK” button.




8. Please press the “OK” button and then the following screen will be shown.

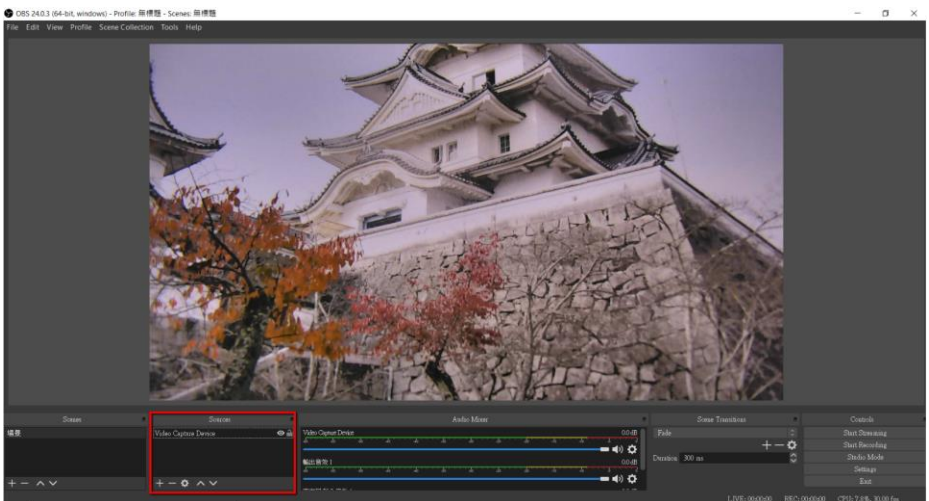


## Audio Setup

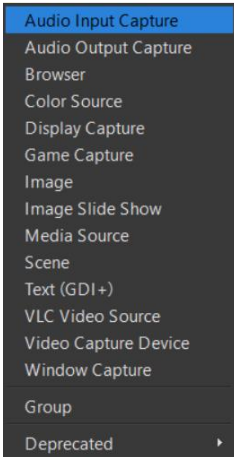
Please follow following steps for setting the audio of the OBS streaming software.

- Use the Embeddd Audio of the HDMI video input source.

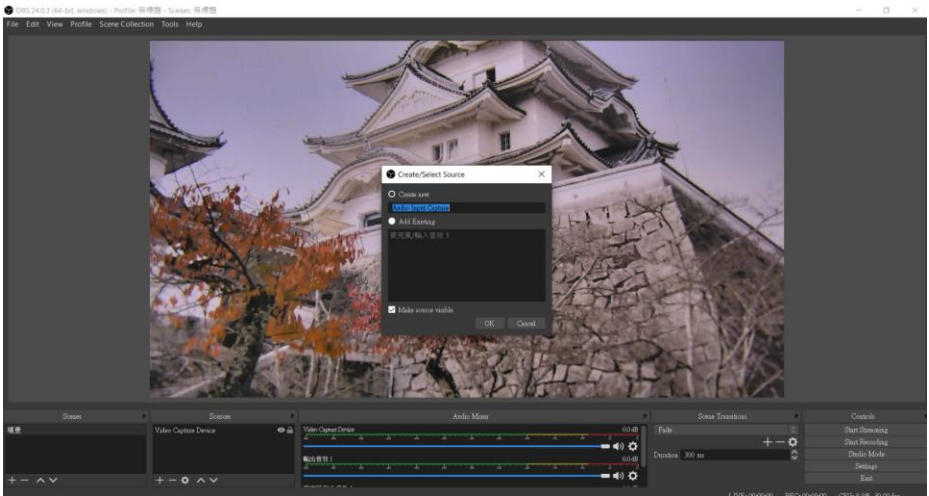
1. Please press the “Add” button  from the “Sources” pane to open the “Source” menu.



2. Please select “Audio Input Capture” option.

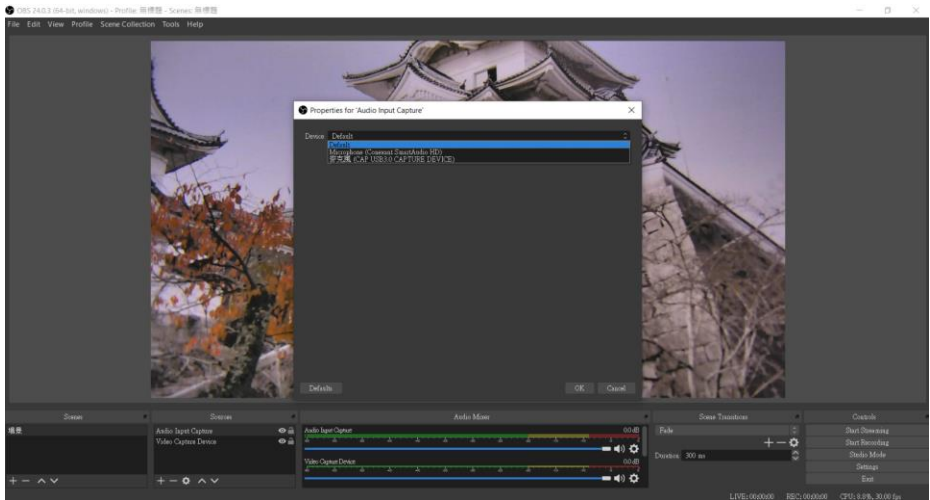


3. There is a “Create/Select Source” popup window that will be shown for users to name the audio source. Please press the “OK” button. It is recommended that the “Make source visible” checkbox must be checked.

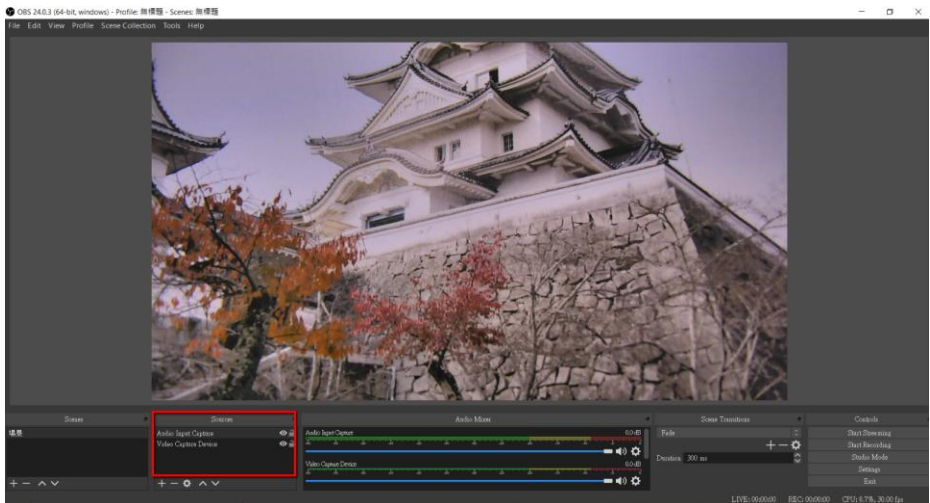





4. There is a “Properties for ‘Audio Input Capture’” popup window will be shown. Please select “Default”, which is the CAP-2, from the “Device” drop-down menu to be the streaming audio capturing device.

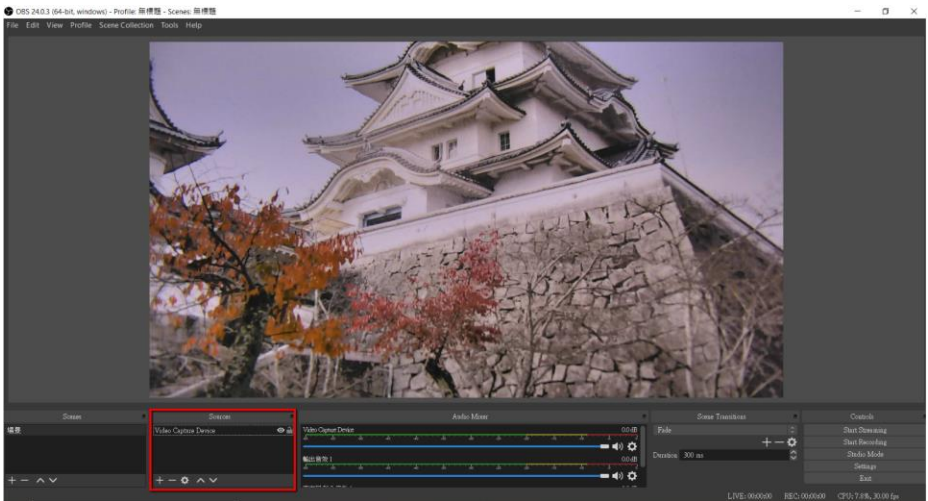


5. Users can see that the video and audio sources are successfully set in the OBS main interface which is shown as following diagram.

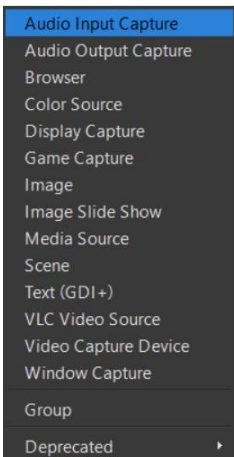


- Use CAP-2 external Connected Audio Source

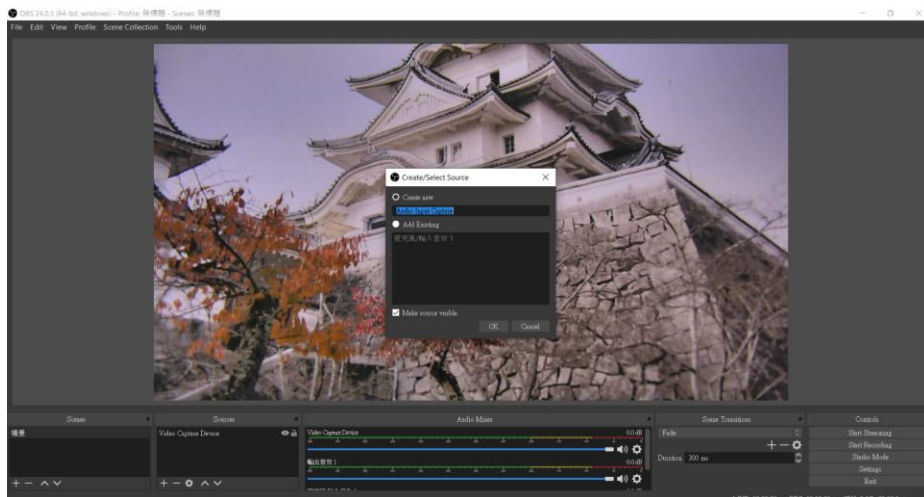
1. Please press the “Add” button  from the “Source” pane to open the “Sources” menu.



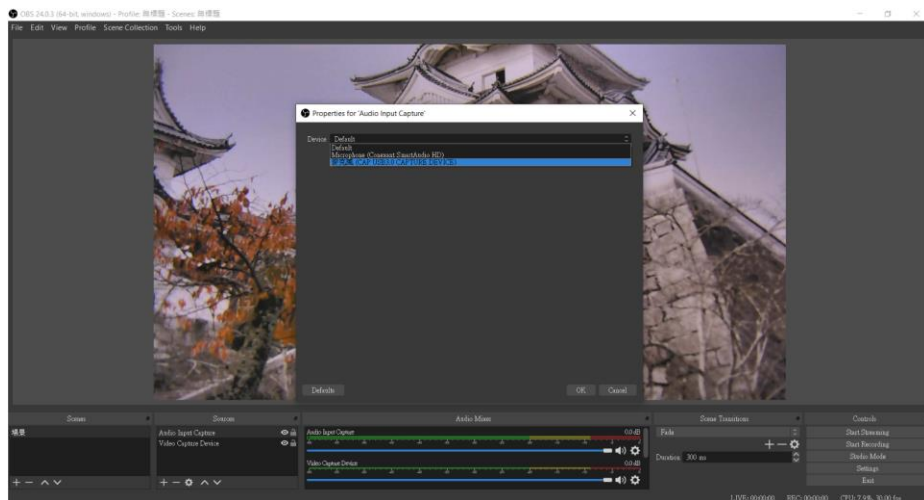
2. Please select “Audio Input Capture” option.



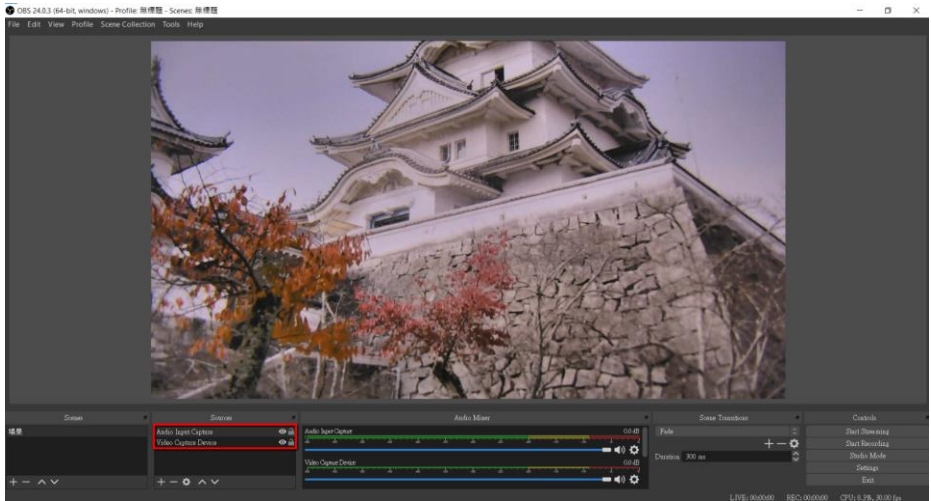
3. There is a “Create/Select Source” popup window that will be shown for users to name the audio source. Please press the “OK” button. It is recommended that the “Make source visible” checkbox must be checked.



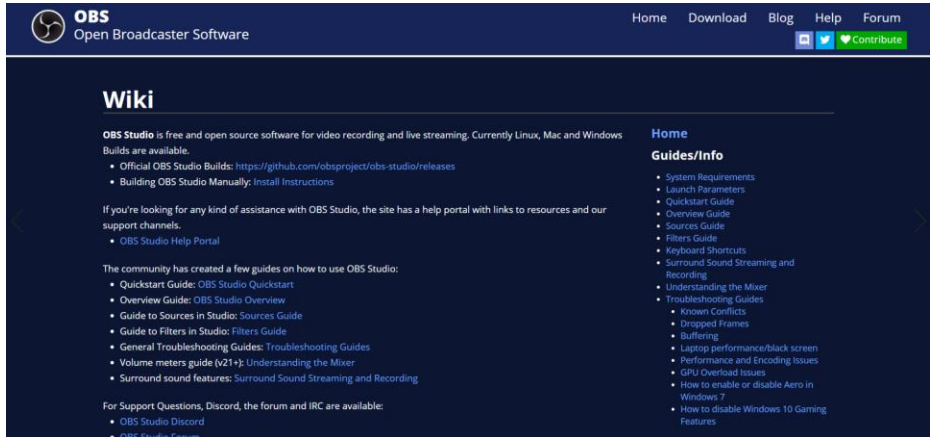
4. There is a “Properties for ‘Audio Input Capture’” popup window will be shown. Please select “麥克風(CAP USB 3.0 CAPTURE DEVICE)”, which is the CAP-2, from the “Device” drop-down menu to be the streaming audio capturing device.



5. Users can see that the video and audio sources are successfully set in the OBS main interface which is shown as following diagram.



**Note:** For the detailed operating instructions for the recording and streaming related functions of the OBS software, please refer to the OBS website <https://obsproject.com/wiki/>



The screenshot shows the OBS Wiki homepage. At the top, there is a navigation bar with the OBS logo and the text "Open Broadcaster Software". To the right of the logo are links for "Home", "Download", "Blog", "Help", and "Forum". Further right are social media icons for GitHub, Twitter, and a "Contribute" button with a heart icon. Below the navigation bar is a horizontal line. The main content area is divided into two columns. The left column is titled "Wiki" and contains a paragraph stating that OBS Studio is free and open source software for video recording and live streaming, currently available on Linux, Mac, and Windows. Below this paragraph are two bullet points: "Official OBS Studio Builds: <https://github.com/obsproject/obs-studio/releases>" and "Building OBS Studio Manually: [Install Instructions](#)". A second paragraph follows, stating that if you're looking for any kind of assistance with OBS Studio, the site has a help portal with links to resources and our support channels, with a bullet point for "OBS Studio Help Portal". A third paragraph states that the community has created a few guides on how to use OBS Studio, followed by a list of bullet points: "Quickstart Guide: [OBS Studio Quickstart](#)", "Overview Guide: [OBS Studio Overview](#)", "Guide to Sources in Studio: [Sources Guide](#)", "Guide to Filters in Studio: [Filters Guide](#)", "General Troubleshooting Guides: [Troubleshooting Guides](#)", "Volume meters guide (v21-): [Understanding the Mixer](#)", and "Surround sound features: [Surround Sound Streaming and Recording](#)". A final paragraph states that for support questions, Discord, the forum, and IRC are available, with a bullet point for "OBS Studio Forum". The right column is titled "Home" and contains a sub-section "Guides/Info" with a list of bullet points: "System Requirements", "Launch Parameters", "Quickstart Guide", "Overview Guide", "Sources Guide", "Filters Guide", "Keyboard Shortcuts", "Surround Sound Streaming and Recording", "Understanding the Mixer", "Troubleshooting Guides" (with sub-bullets for "Known Conflicts" and "Dropped Frames"), "Buffering", "Laptop performance/black screen", "Performance and Encoding Issues", "GPU Overload Issues", "How to enable or disable Aero in Windows 7", and "How to disable Windows 10 Gaming Features".

## 5. CAP-2 Compatibility Table for Third-Party Softwares

Please refer to following diagram for the compatibility for applying the CAP-2 with various third-party softwares by different OS platforms.

### Datavideo Full Series of Capture Box



Product Name	CAP-1	CAP-2
	SDI to USB 3.0 Capture Box	HDMI to USB 3.0 Capture Box
OBS Studio	Windows/Mac OS X/Linux*	Windows/Mac OS X/Linux*
Skype	Windows/Mac OS X/Linux**	Windows/Mac OS X/Linux**
Zoom.us	Windows/Mac OS X/Linux	Windows/Mac OS X/Linux
AMCap	Windows	Windows
Xsplit Broadcaster	Windows	Windows
Quick Time	Mac OS X	Mac OS X
Google Plus Hangout	Windows	Windows
Teamviewer	Windows	Windows
Media Player Classics	Windows	Windows
Microsoft Teams	Windows/Linux*	Windows/Linux*
Facetime	Mac OS X	Mac OS X
Potplayer	Windows	Windows
VLC	Windows/Mac OS X/Linux	Windows/Mac OS X/Linux
Windows	Win7/8.1/10 (The driver is required for Win7)	Win7/8.1/10 (The driver is required for Win7)
Mac OS X	10.13.5/10.14.6 (at least 10.13 or above)	10.13.5/10.14.6 (at least 10.13 or above)
Linux	Ubuntu 20.04 (at least 14.04 or above)	Ubuntu 20.04 (at least 14.04 or above)

\*With MAC: A1706, produced in 2018, OS ver.:10.14, it has no audio output.

\*\*When the input resolution is 1080i, the output setting must be 1080p or 720p.

\*\*\*Microsoft Teams can only output resolution 640x360.

\*\*\*\* The compatibility issue cannot be fixed via hardware or firmware revision. VLC doesn't work smoothly and well on most Windows, MAC OS, and Linux.

## 6. Firmware Update

Please follow following steps for updating the firmware for CP-2.

### Requirements

- a) CAP-2 x 1
- b) Notebook PC x 1
- c) USB 3.0 Cable x 1 (Please use the cable which is bundled with the CAP-2)
- d) Application Software: UVC V1.3



- e) Latest Firmware
  - CAP-2\_Main\_Vx.x.bin
  - CAP-2\_Capture\_Vx.x.bin

## System Diagram



Please follow following steps for updating the CAP-2 firmware.

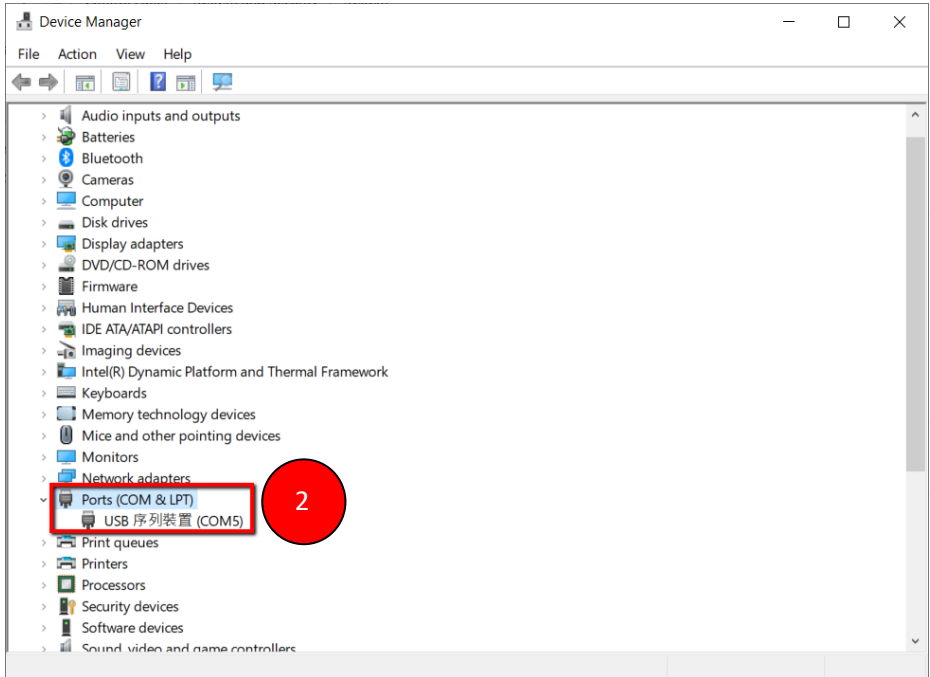


## Firmware Update Procedure

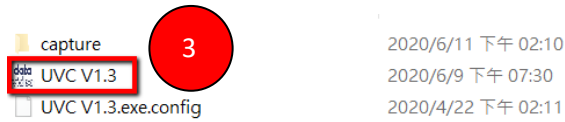
### ● Main Firmware Update

1. Please connect an USB 3.0 cable from CAP-2 to your laptop.

2. Users can see the connected CAP-2 from the “Device Manager” of the Windows OS.



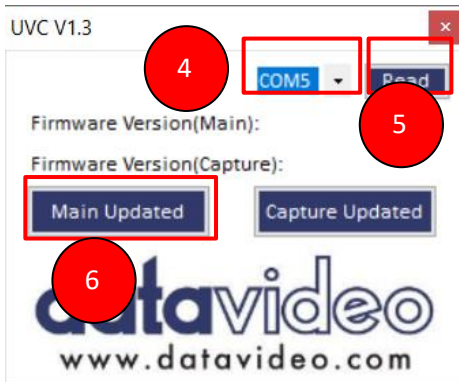
3. Please double-click to open the CAP-2 application software “UVC V1.3”.



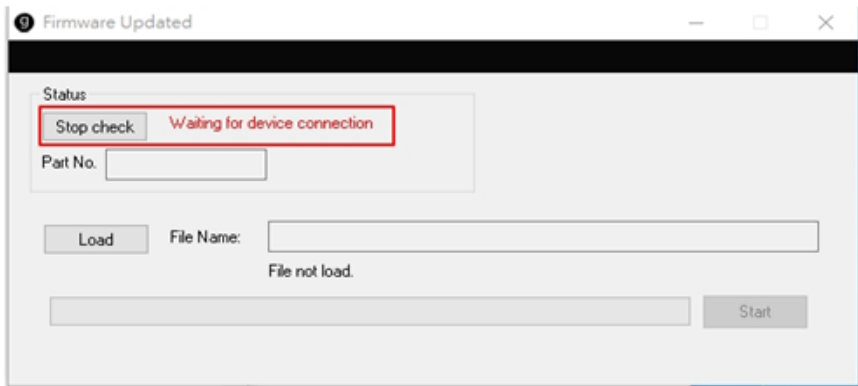
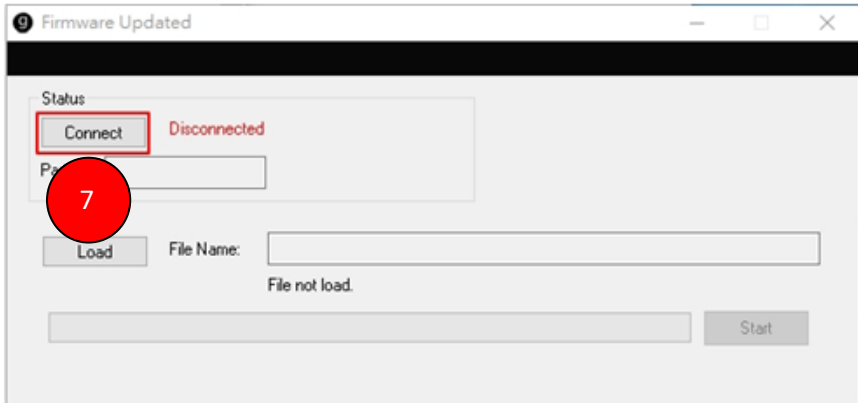
4. Please select the correct COM port.

5. Please click the “Read” button.

6. Please click the “Main Updated” button.




7. Please press the “Connect” button.

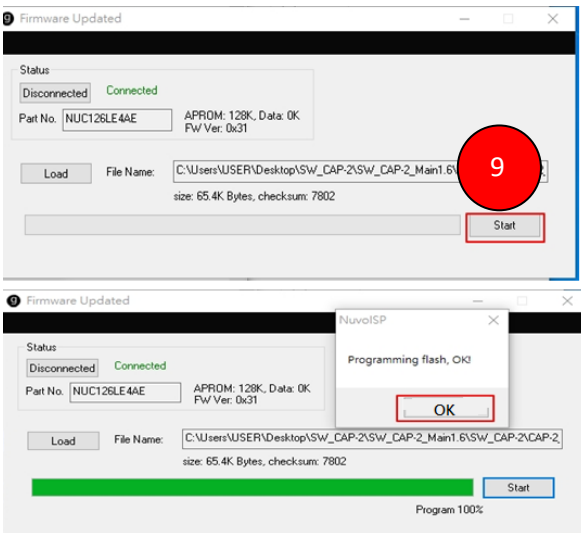


8. Please re-plug the USB cable and then please press the “Load” button to load the “CAP-2\_Main\_VX.X.bin” file.



 CAP-2\_Main\_V1.7.bin

9. Please press the “Start” button and then please wait until the progress bar reaches 100%, the firmware update procedure is finished. After the “Programming flash,OK!” pop-up window is shown, please press the “OK” button.



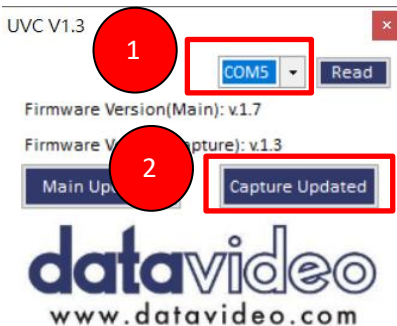
10. After the firmware update procedure is finished, users can see the latest firmware version No. which is shown as following diagram.



### ● Capture Firmware Update

Please follow following steps for updating the Capture firmware.

1. Please re-plug the USB 3.0 cable.
2. Please launch the “UVC” software.
3. Please select correct COM port.
4. “Please press the “Capture Updated” button.



5. Please wait until the green sentence “Burn Pass” is shown.

```
C:\WINDOWS\system32\cmd.exe
CheckParameter, FUNCTION_BURN_BIN_FILE
Found device: CAP USB3.0 CAPTURE DEVICE [\\?\usb#vid_1e4e&pid_7016&mi_00#7&4518fe1&0&0000#(65e8773d-8f56-11d0-a3b9-00a0c9223196)\global]
BurnBinFile: index: 0

Burning - SPI ROM Access

BinFileLength 49152
Erase Bin file ...

Write Bin file to ROM
[OffsetStart : OffsetEnd] 45056 : 49152
Burn Pass

C:\Users\USER\Desktop\SW_CAP-2\capture\HW_FW_DESC>cd..
C:\Users\USER\Desktop\SW_CAP-2\capture>call 04.Burn_SERIAL.bat
C:\Users\USER\Desktop\SW_CAP-2\capture>cd HW_FW_DESC\
C:\Users\USER\Desktop\SW_CAP-2\capture\HW_FW_DESC>P2ndRomMisc_v4.0.1.1.exe SER 123456789abcde SPI_25L12835F.cfg
Found device: CAP USB3.0 CAPTURE DEVICE [\\?\usb#vid_1e4e&pid_7016&mi_00#7&4518fe1&0&0000#(65e8773d-8f56-11d0-a3b9-00a0c9223196)\global]
SET_SERIAL_NUM: index: 0

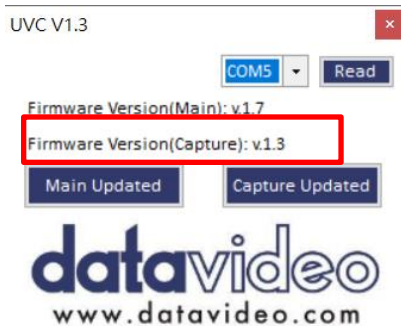
Modify - SPI ROM Access

Erase Misc sector ...
[OffsetStart : OffsetEnd] 45056 : 45096
Burn Pass

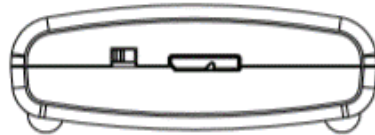
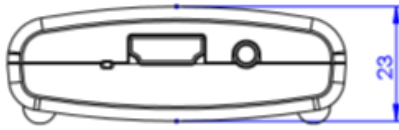
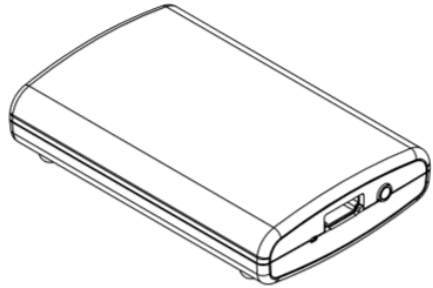
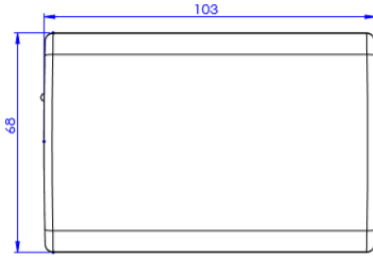
C:\Users\USER\Desktop\SW_CAP-2\capture\HW_FW_DESC>pause
請按任意鍵繼續 . . .
```

6. The firmware update procedure for the Capture function is finished.

7. After the firmware update procedure is finished, users can check the Capture firmware version which is shown as following diagram.



## 7. Dimensions




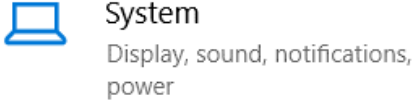
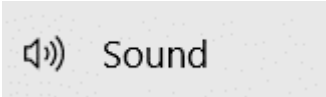
Unit: mm

## 8. Frequently-Asked Questions

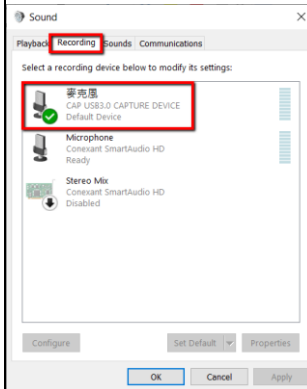
This section describes problems that you may encounter while using the CAP-2. If you have questions, please refer to related sections and follow all the suggested solutions. If problem still exists, please contact your distributor or the service center.

No.	Problems	Solutions
1.	<b>Why the CAP-2 HDMI to USB 3.0 Capture Box can not be detected?</b>	Please make sure that the OS system of your computer is qualified for the CAP-2 application. Please refer to the OS versions which are listed in the Specifications. Moreover, please make sure that the USB 3.0 connector of your Laptop can supply up to 900mA current.
2	<b>Why the captured video is so laggy?</b>	Please check the operation status of the software programs on your computer. If there are too many software programs that are operated simultaneously, you will need higher RAM capacity to ensure its smooth operation. The RAM capacity can be increased to 8GB or higher according to your need.
3	<b>Why the USB 3.0 Cable cannot be detected?</b>	Please use the USB 3.0 cable which is supplied by Datavideo.
4	<b>Why the “No Picture” issue will happen when using the CAP-2 with the third-party software such as OBS, Zoom and Skype?</b>	Please check that whether the power of your input source is turned on. Moreover, please check whether the HDMI connector of the CAP-2 is connected correctly or not. Furthermore, please check whether the UVC device is detected and occupied by the third-party software in your system. If the answer is Yes, it will cause the issue that the video can not be opened by other third-party software correctly.

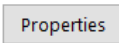


<p><b>5</b></p>	<p><b>If there is no audio, how to check whether the audio setting of the OS is 48KHz or not?</b></p>	<p>Please follow following steps for confirming the audio settings of the OS (For Windows 10)</p> <ol style="list-style-type: none"><li>1. Please search “Settings”.</li></ol>  <p>2. Please select “System”.</p>  <p>3. Please click “Sound” button.</p>  <p>4. Please click the “Sound Control Panel” which is located at the top-right side.</p>
-----------------	---	---

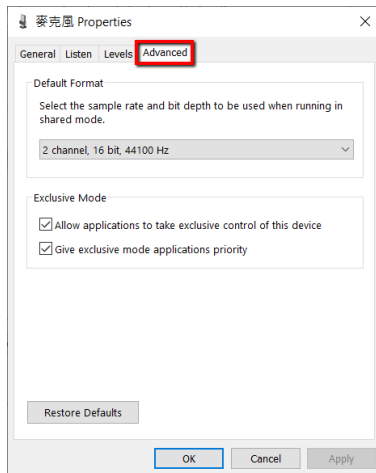
5. Please click “Recording”, and then please click Microphone “CAP USB3.0 CAPTUR DEVICE”.

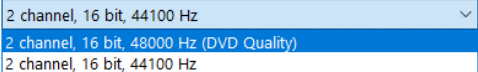


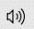


6. Please click “Properties”.

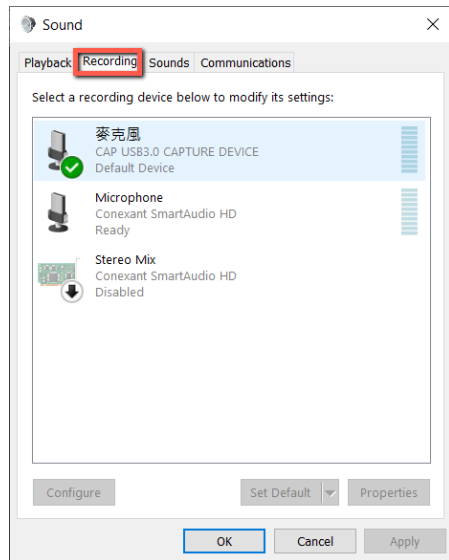


7. Please click “Advanced”.

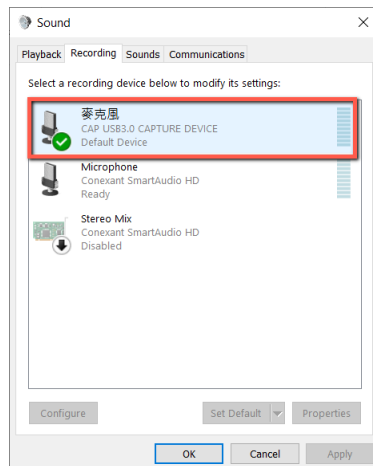


		<p>8. Users can check the recording sampling rate of the CAP-2 external connected microphone. Moreover, users can select the sampling rate from the drop-down menu.</p> 
<p>6</p>	<p><b>How to solve the issue that the Audio level is too low?</b></p>	<p>When the audio level is too low, please confirm that whether the audio level setting of your PC is 100 or not. Please follow following steps for confirming the audio level.</p> <ol style="list-style-type: none"> <li>1. Please click “Settings”  button from the Start Menu of the Windows OS (Take Windows 10 as an example).</li> <li>2. Please click “System”  System Display, sound, notifications, power .</li> <li>3. Please click “Sound”  Sound .</li> </ol>

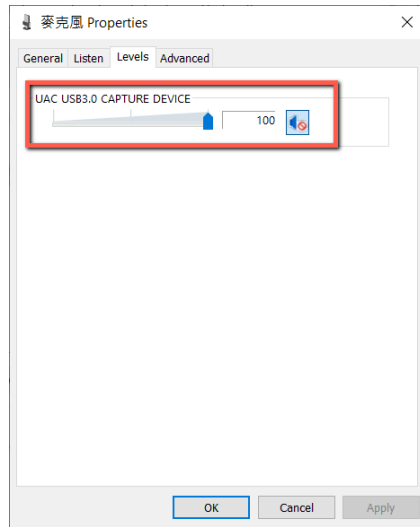
4. Please click “Sound Control Panel” option [Sound Control Panel](#) , and then the Sound Control Panel will be shown as following diagram, please click the “Recording” button.



5. Please double-click “CAP USB3.0 CAPTURE DEVICE” option.



6. Please click the “Levels” button and then adjust the sound level to 100 by the slider.



## 9. Specifications

<b>CAP-2</b>	
<b>Model</b>	CAP-2
<b>Product Name</b>	HDMI to USB 3.0 Capture Box
<b>Input</b>	<ul style="list-style-type: none"> <li>• 1x HDMI</li> </ul>
<b>Output</b>	<ul style="list-style-type: none"> <li>• 1x USB 3.0 (Micro B)</li> </ul>
<b>Input Video Bandwidth</b>	<ul style="list-style-type: none"> <li>• 150MHz (pixel clock rate)</li> </ul>
<b>Output Video Bandwidth</b>	<ul style="list-style-type: none"> <li>• Up to 350Mbps (USB)</li> </ul>
<b>Supported Input VideoFormats</b>	1920 x 1080p 60/59.94/50/30/29.97/25/24/23.976 1920 x 1080i 60/59.94/50 (de-interlaced out) 1680 x 1050p 60 1600 x 1200p 60 1440 x 900p 75/60 1400 x 1050p 60 1366 x 768p 60 1360 x 768p 60 1280 x 1024p 75/60 1280 x 720p 60/59.94/50 1024 x 768p 75/60 800 x 600p 75/60 720 x 576p 50 720 x 480p 60 640 x 480p 60
<b>Supported Output Video Formats</b>	1920 x 1080p 60/50/30/25/24 1680 x 1068p 60 1440 x 1080p 60 1440 x 896p 60 1360 x 768p 60 1280 x 768p 60 1280 x 720p 60/50 1024 x 768p 60 960 x 536p 60 848 x 480p 60 768 x 576p 60 720 x 480p 60/50 640 x 480p 60 640 x 360p 60
<b>Audio Input</b>	HDMI Embedded Audio & 3.5 mm stereo in

<b>Audio Format</b>	2-Channel, 44.1KHz and 48KHz sample rate embedded in, up to 24-bit PCM, fixed 48KHz output
<b>Captured Video Format</b>	YUY2 (USB3.0), MJPG (USB2.0/3.0)
<b>Firmware Update</b>	Via USB Port
<b>Others</b>	
<b>Software Compatibility</b>	<ul style="list-style-type: none"> <li>• Windows: Amcap, Google Plus Hangouts, OBS (Open Broadcast Software), Skype, VLC, Xsplit Broadcaster, Zoom.us</li> <li>• Linux: VLC, OBS</li> <li>• Mac OS X: OBS, Quicktime player, VLC, Facetime</li> </ul>
<b>Supported OS</b>	Windows® 7(SP1) / Windows 10 / Windows 8.1 / Windows 7 (x86, x64), OS X (10.10 or above), Linux Ubuntu 14.04
<b>Power Supply</b>	Via USB
<b>Power Consumption</b>	2W
<b>Operation Temperature</b>	0~40°C
<b>Storage Temperature</b>	-20~60°C
<b>Humidity</b>	20~90% RH (no condensation)
<b>Mnimum System Requirements</b>	<p>Windows® 7(SP1) / Windows 10 / Windows 8.1 / Windows 7 (x86, x64)</p> <p>Note: The driver is required for Windows 7 OS OS X (10.10 or above)</p> <p>Linux Ubuntu 14.04</p> <p>PC: Intel® CoreTM i5-4440 3.10GHz + NVIDIA® GeForce® GTX 660 or higher</p> <p>Laptop: Intel® Core i7-4810MQ + NVIDIA GeForce GTX 870M or higher</p> <p><b>4GB RAM or higher</b></p>
<b>Dimensions</b>	105 (L) x 68 (D) x 23 (H) mm
<b>Weight</b>	70g

## Service & Support

It is our goal to make your products ownership a satisfying experience. Our supporting staff is available to assist you in setting up and operating your system. Please refer to our web site [www.datavideo.com](http://www.datavideo.com) for answers to common questions, support requests or contact your local office below.



Please visit our website for latest manual update.  
<https://www.datavideo.com/product/CAP-2>

**datavideo**  
[www.datavideo.com](http://www.datavideo.com)



@DatavideoUSA @DatavideoIndia2016  
@DatavideoEMEA @Datavideojapan  
@DatavideoTaiwan @DatavideoLatam  
@DatavideoAsia @DatavideoBrasil



@Datavideo  
@Datavideo\_EMEA  
@Datavideo\_Taiwan



@DatavideoUSA  
@DVTWDCVN



@DatavideoUSA  
@DatavideoEurope

All the trademarks are the properties of their respective owners.  
Datavideo Technologies Co., Ltd. All rights reserved 2020