



PRECISION DIAGNOSIS



AVer MD330U

Medical Grade PTZ Camera



AVer MD330U is specially designed and medically certified for Telemedicine with the IEC 60601 Medical Certification. The 30X optical zoom lens with 4K output resolution delivers superb image quality. AI Noise Reduction offers a face-to-face communication experience for patients and doctors. A first in the industry, the removable camera head makes 360-degree angle close-up shooting and snapshots possible.



30X Optical Zoom



4K Output Resolution



Speedy Focus



Wide Angle PTZ



Handheld Camera Head



Short Working Distance



One-Click Pan-Tilt



One-Button Snapshot



One-Button Fill Light



Medical Certifications

Revolutionary Removable Head Design

The removable camera head design is a true revolution in telemedicine – not only can the doctor make use of the motorized remote controlled PTZ functionality, the near-site medical assistant can also simply remove the camera from the base and easily give the doctor a clear view of any difficulties to capture area of interest.



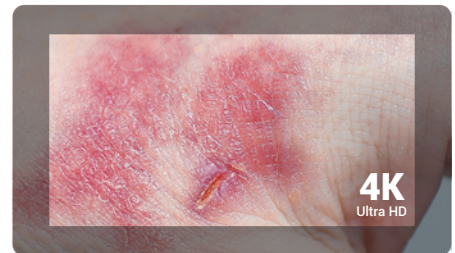
Unparalleled 30X Optical Zoom Capability

The 30X optical zoom lens picks up even the smallest of details for the doctor to precisely diagnose, thanks to a superior autofocus, zoom speed and speedy camera movements.



Outstanding 4K Resolution

The MD330U delivers ultra-clear 4K resolution imagery of the patient to the doctor and works together with the excellent 30X optical zoom to allow doctors to make accurate remote diagnoses.



AI Acoustics

With an integrated speakerphone and microphone, the MD330U is equipped with an all-in-one audio system. AVer's in-house AI Noise Deduction technology makes communication smooth and telemedicine sessions stress free.



Medical Grade Certification

The IEC 60601 medical certification not only ensures stability and safety of the MD330U, but also guarantees the compatibility of other medical grade devices with the MD330U.



Product Specifications

Part no. 61S3310000AC
EAN code 4719552127306

Camera		Audio	
Image Sensor	1/2.8" 4K Exmor CMOS	Embedded Speaker	Yes
Effective Picture Elements	8 Megapixels	Microphone	Yes, Array Microphone
Output Resolutions	4K/30 (IP / UVC), 1080p/50, 1080p/30, 1080p/29.97, 1080p/25, 1080i/60, 1080i/50, 720p/60, 720p/59.94, 720p/50	AI Noise Reduction	Yes
Minimum Illumination	0.7 lux (IRE50, F1.6, 30fps)	Interface	
S/N Ratio	≥ 50 dB	Video Outputs	HDMI, IP, USB
Gain	Auto, Manual	Audio Outputs	HDMI, IP, USB
Shutter Speed	1/1 to 1/10,000 sec	IP Streaming	
Exposure Control	Auto, Manual, Priority AE (Shutter, IRIS), BLC, WDR	Resolution	4K 30fps
White Balance	Auto, Manual	Network Video Compress Formats	H.264, H.265
Optical Zoom	30X	Maximum Frame Rate	4K 30fps
Viewing Angles	DFOV: 75.5° (Wide) to 3.1° (Tele)	Network Interface	10 / 100 / 1000 Base-T
	HFOV: 68.0° (Wide) to 2.7° (Tele)	Multi-Stream Capability	2 (RTSP / Web Page), 4K 30fps (max.)
	VFOV: 41.7° (Wide) to 1.5° (Tele)	Network Protocols	IPv4, TCP, UDP, ARP, ICMP, IGMP, HTTP, DHCP, RTP / RTCP, RTSP, RTMP, VISCA over IP
Focal Length	f = 4.3 mm (Wide) to 129 mm (Tele)	USB	
Aperture (Iris)	F = 1.6 (Wide) to 4.7 (Tele)	Connector	USB 3.0
Minimum Working Distance	0.01 m (Wide), 1.2 m (Tele)	Video Format	MJPEG, YUY2
Pan / Tilt Angles	Pan: ±170°, Tilt: +90° / -35°	Audio Format	PCM
Pan / Tilt Speed (Manual)	Pan: 0.1° to 100° / sec, Tilt: 0.1° to 100° / sec	USB Video Class (UVC)	UVC 1.1
Preset Speed	Pan: 200° / sec, Tilt: 200° / sec	USB Audio Class (UAC)	UAC 1.0
Preset Positions	10 (IR), 256 (RS-232 / IP)	Software Tools	
Camera Control - Protocols	VISCA (RS-232 / IP), PELCO-D & PELCO-P (RS-232), CGI (IP)	IP Search and Configuration Tool	Support Windows® 7 or later
Image Processing	Noise Reduction (2D / 3D), Flip, Mirror, WDR, BLC	Warranty	
Power Frequencies	50 Hz, 60 Hz	Camera	3 Years
General		Accessories	1 Year
Power Requirement	AC 100 - 240V to DC 12V/3.34A	Package Contents	
Power Consumption	36W	Camera, Remote Control, Power Adapter, Power Cord, Screws (x2), USB Cable, Quick Start Guide	
Dimensions (W x H x D)	168.0 x 203.0 x 124.0 mm		
Net Weight	1.95 kg		
Application	Indoor		
Tally Lamp	N/A		
Security	Kensington Slot		
Remote Control	Infrared		
Operating Conditions	Temperature: 0 °C to +35 °C; Humidity: 20% to 80%		
Storage Conditions	Temperature: -20 °C to +60 °C; Humidity: 20% to 95%		

* Specifications may vary depending on location and are subject to change without notice.

Product Appearance

Front



- 1. Removable Camera Lens
- 2. Speaker
- 3. Microphone Array
- 4. LED Indicator
- 5. Mode Switch Button

Back



- 1. USB Type-A for Camera Connection
- 2. RJ45
- 3. USB 3.0 Type-B
- 4. HDMI
- 5. USB Type-A
- 6. microSD Card Slot
- 7. RS-232
- 8. DC 12V
- 9. Kensington Slot

Camera



- 1. Snapshot Button
- 2. Fill Light Button



©2022 AVer Information Europe B.V. All rights reserved.
All brand names and logos are trademarks of their respective companies.



Distributor/Dealer