

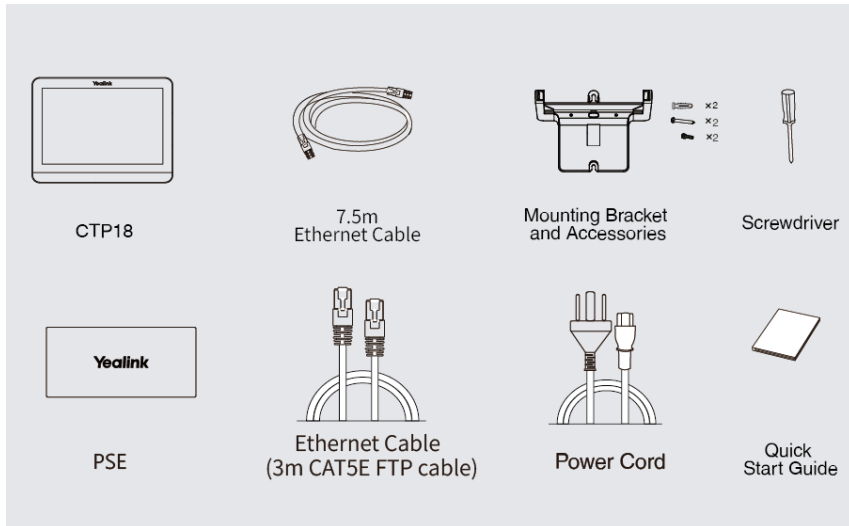
CTP18 Quick Start

Introduction

CTP18 is a collaboration touch panel designed for small and medium rooms. After the CTP18 is successfully paired with the MeetingBar AX0, you can use the CTP18 to operate the MeetingBar AX0.

This chapter will introduce you step by step how to install, deploy and pair with MeetingBar AX0 after purchasing CTP18 for the first time.

Packet Content



Before You Begin

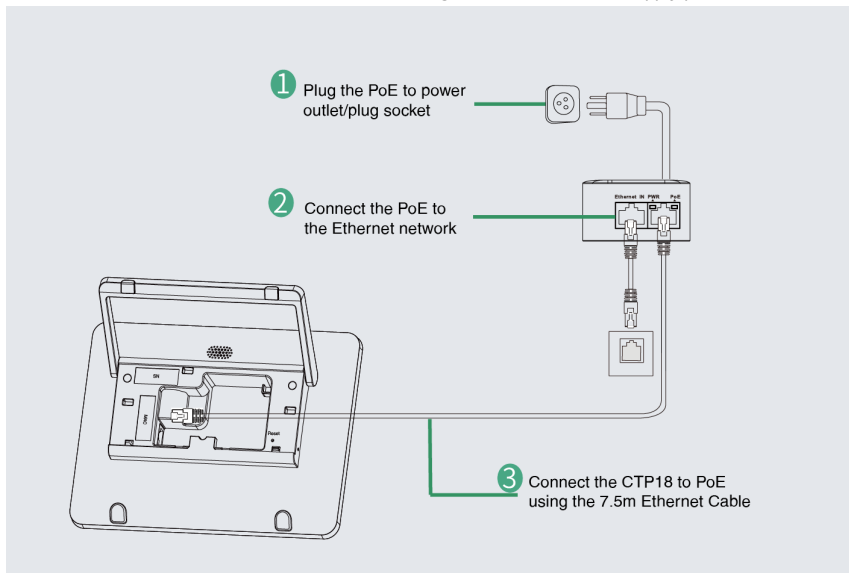
- MeetingBar AX0 has been deployed. Please refer to [MeetingBar AX0 Quick Start](#).
- Make sure that CTP18 and MeetingBar AX0 are in the same LAN or connected to the same Wi-Fi.
- CTP18 has an independent network and cannot be connected to MeetingBar AX0.

Connection

CTP18:

CTP18 can only be powered by PoE, take PSE as an example.

1. Connect the PSE to power.
2. Connect the PSE to the network via an Ethernet Cable. If you use a Wi-Fi connection for network supply, you can skip this step.
3. Connect the other end of the PoE to the CTP18 using an Ethernet Cable to supply power to the CTP18.



Pairing

To operate the MeetingBar AX0 with the CTP18, you need to first pair it with the MeetingBar AX0. Please refer to [CTP18&MeetingBar AX0 Pairing](#).