

datavideo



4K Multi-channel Streaming Switcher

KMU-300



All-in-One Live Streaming Solution
for Landscape and Portrait Modes







4K Multi-channel Streaming Switcher

KMU-300

All-in-One Live Streaming Solution
for Landscape and Portrait Modes

Camera Control | Switching
| Dual-Platform Live Streaming
| Recording | Audio Mixer

- Vertical / Horizontal Dual-Screen Switching
- Single-Finger Touch Screen Switching
- Vertical / Horizontal Encoding Dual-Platform Live Streaming
- H.264 Encoding Recording to SD Card
- Pan-Tilt-Zoom (PTZ) Control
- Four-Channel Audio Mixer, Audio Embedding
- Six-Camera High-Definition Signal Switching Output

The KMU-300 is an all-in-one solution that takes 4K signal inputs and outputs them as 1080p high-definition signals. It allows you to control PTZ (Pan-Tilt-Zoom) cameras' panning, tilting, and zooming using a joystick and knob. You can also use buttons to select the desired frames for output. The unit features a 14-inch capacitive touchscreen that supports gesture-based switching of frames.

The KMU-300 can simultaneously output multiple landscape or portrait screens. The resulting full HD signals can be streamed in real-time to two live streaming platforms and simultaneously stored on an SD card. This all-in-one device enables camera control, audio mixing, dual-stream media streaming, backup recording, and more. It's perfect for use in self-media studios, allowing one person to handle multitasking broadcasting operations.



- 1 Joystick: Control of frame panning / Camera control
- 2 Zoom Knob: Capture screen zoom in / zoom out
- 3 Capture Box Movement Speed: Fast / Medium / Slow
- 4 Four Composition Signal Switching / Capture Screen Button
- 5 Headphone Monitoring: Volume Knob
- 6 SD Card Slot: H.264 Recording
- 7 Audio Mixer Knobs: MIC 1 / MIC 2 / AUX IN / DIGITAL / MASTER
- 8 Encoding Buttons: BITRATE / VERTICAL / RECORD / STREAM
- 9 L: 1080p, S: 720p, Portrait: Vertical
- 10 Capture Screen Drag and Panning Control Lock
- 11 Full Screen HD Output
- 12 PC Screen Output



Easy Control of Scene Selection and Camera Operation

In addition to using gestures on the touchscreen to directly control scene selection on the KMU-300, the joystick and knobs can also be used to control scene selection.



Additional HDMI Interface for Presenter's PPT Input

Equipped with dedicated HDMI inputs and outputs for PC signals, making it convenient to transmit presenter's PPT content. This allows the director to switch and monitor the PPT content live on site.



Single 4K Camera Creates the Effect of Five HD Camera Angles

The KMU-300 supports converting 1 channel of 4K ultra-high-definition input into 5 sets of high-definition images, allowing a single camera to create the effect of five camera angles.

4K



BC-15C

BC-15P



PTC-280

Direct H.264 Format Recording on SD Card

During live broadcasts, the KMU-300 enables you to simultaneously conduct dual-platform live streaming and on-site SD card recording, providing you with a complete solution.

H.264



Supports Audio Embedding in Video

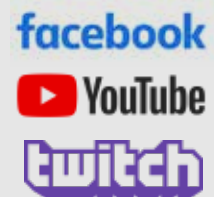
The KMU-300 supports audio embedding with RCA, XLR, 4K camera, and PC audio embedding audio mixer, providing audio volume adjustment.

embedded



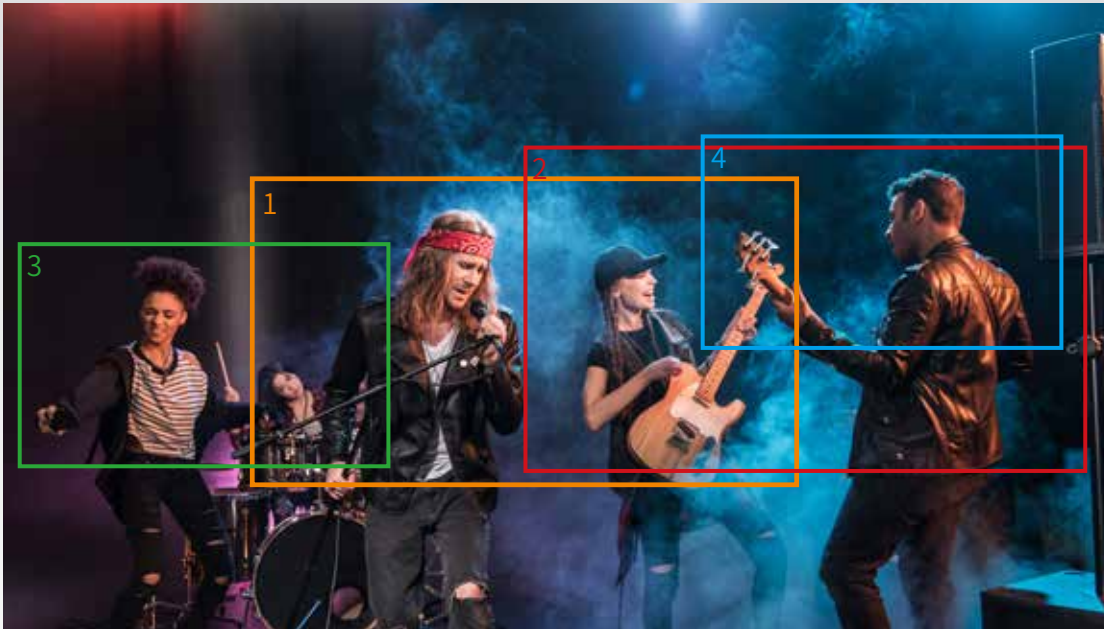
Real-time Dual-Coded Vertical or Horizontal Screen Live Streaming to Two Different Platforms

Built with dual H.264 network live streaming encoders, the KMU-300 can directly live stream to your choice of CDN. Simply connect the KMU-300 to the network, connect the PC to the same network, and set up the live streaming path. After that, press the live streaming button to start broadcasting, immediately transmitting the program content to two different live streaming platforms. The built-in live streaming encoder reduces the complexity of live production, requiring only one KMU-300 unit to achieve it all.



Create Your Professional Landscape Program

When using the landscape switching mode with the KMU-300, you can easily switch between the four selected frame pictures on the right side of the screen, full-screen mode, or computer output using the corresponding buttons. The operation is simple and user-friendly. The frame selection area can also be adjusted as presets in advance, making on-site video production convenient.



Button 1



Button 2



Button 3



Button 4



Button 5 (Full Screen)



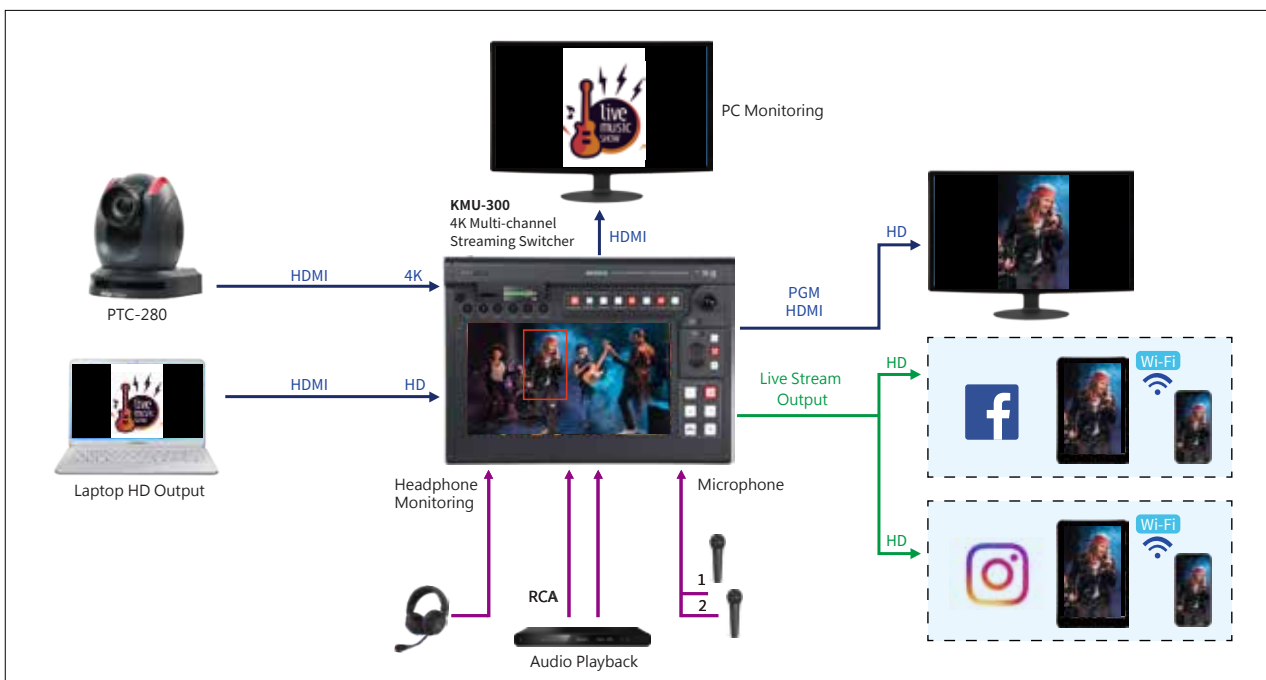
PC Button

Create Your Professional Portrait Program

When using the portrait switching mode with the KMU-300, you can easily switch between the four frame pictures using the buttons on the right side of the screen. The operation is simple and user-friendly. The frame selection areas can also be adjusted as presets in advance, making on-site video production convenient.



Portrait Live Stream Connection Diagram



KMU-300	
Product Name	4K Multi-channel Streaming Switcher
Video Standard	UHD & HD
Video Format	Input: 3840x2160p 23.98/24/25/29.97/30/50/59.94/60 1080p 50/59.94/60 Output: 1080p 50/59.94/60 720p 50/59.94/60
Video Processing	4:4:4 / 4:2:2 / 4:2:0
Video Input	1x HDMI 2.0 1x HDMI 1.4 with Loop through
Video Output	3x HDMI 1.4 (Program) 1x HDMI 1.4 (Aux: Ch1-Ch4)
Support Video Output Resolution	1920 x 1080p 50/59.94/60 1280 x 720p 50/59.94/60
Multiview Out	---
Multiview Mode	---
Streaming	
Streaming Encode	H.264/AVC, Main/High Profile
Streaming Video Bitrate	Record Only: Up to 16Mbps (1080p50/60) Stream Only: Up to 10Mbps (1080p50/60), dual stream Record+Stream: 36Mbps (1080p50/60)
Streaming Video Rate Mode	CBR
Streaming Audio Mode	Stereo/Mono
Streaming Audio Bitrate	Stereo: 64~384Kbps Mono: 32~192Kbps
Streaming Protocols	TS over TCP/UDP (unicast & multicast) RTSP over HTTP/TCP/UDP (RTSP Elementary Streaming) RTMP/RTMPS (Publish) HLS SRT
Network Interface	1x RJ45 (10/100Mbps Ethernet)
Recording	
Recording Storage Medium	SD Card (Class 10 above)
Recording Storage File System	NTFS, FAT, exFAT
Recorded File Format	MP4
Built-in Audio Mixer	Yes, 4 channels
Audio	
Audio Input	2x XLR(Mic) 2x RCA
Audio Output	2x Unbalanced RCA
Audio Sampling	---
Reference Input	---
Others	
Control Interface	---
Preview Display	14" Capacitive Touch LCD
Controller	---
Dimension (LxWxH)	438 x 331 x 114 mm
Weight	4.3 kg
Power Supply	DC 12V, 52W
Operating Temp. Range	0~40 °C
What's in the box	1 x KMU-300 Main Unit 1 x AD Switch DC 12V with AC Cord



@DataVideoUSA @DataVideoAsia
@DataVideoEMEA @DataVideoIndia2016
@DataVideoTaiwan @DataVideoJapan



@DataVideo
@DataVideo_EMEA
@DataVideo_Taiwan



@DataVideoUSA
@DVTWDVCN



@DataVideoUSA
@DataVideoEurope

Disclaimers of Product and Services

This brochure is intended as a guide only. We reserve the right to change specifications and availability without prior notice. While we strive for complete accuracy, be aware that it may contain errors and omissions. Prior to purchase, please check with your local DataVideo office or authorised distributor.

Ver.20230830