

## OPCUWM900

# Ultra Short Throw Wall Mount

The OPCUWM900 projector wall mount for the Optoma ultra short throw projector features a high quality telescopic arm and adjustable mounting plate for perfect installation with a screen or interactive whiteboard in education or corporate environments.

### Key Features

- Sturdy Design
- Adjustable
- Easy to set up
- Cable management
- Security against theft
- Projection without shadows



## EASY INSTALLATION

A single installer is able to attach the wall mount to the wall to ensure a safe and secure installation for the projector.

## SCREEN SIZE

Ideally suited to the Optoma ultra short throw projector giving a maximum projected image of 100".

## FLEXIBILITY

To fit a variety of different screen sizes using the telescopic mount with multiple locking points. Universal mounting plate provides the flexibility for the mount to fit other brands of ultra short throw projectors.

## ADJUSTMENT

The mounting plate can be adjusted horizontally and vertically for fine adjustment for projection on to a screen or interactive whiteboard.

## CABLE MANAGEMENT

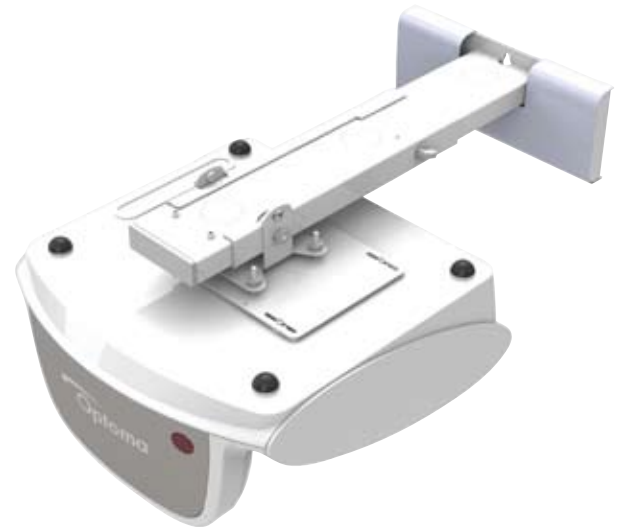
Cleverly designed to ensure cables are concealed to ensure a neat, tamper proof installation.

## PROFESSIONAL FINISH

Once the installation is complete a wall plate gives the mount a professional look in any room.

## SPECIFICATIONS

Extension	395mm to 770mm (from wall to mirror)
Adjustment	± 5° tilt 4-point vernier adjustment tilt and yaw 20mm left/right lateral adjustment
Finish	Durable textured white coating
Product Weight	5.2kg
Packed dimensions	580mm x 330mm x 155mm
Packed weight	6.4kg
Max weight loading	15kg
Manufactured	UK



Optoma Europe Ltd.  
42 Caxton Way, Watford Business Park, Watford, Hertfordshire, UK. WD18 8QZ

[www.optoma.eu](http://www.optoma.eu)