

## A Guide to Presentation Switchers



 **CAST 10 NDI**



 **CAST mini**

### Choosing A Presentation Switcher for your Application

If you are giving an online presentation where multiple inputs are being switched, this guide will help you decide which DataVideo presentation switcher is right for your needs. This guide will identify 5 categories to consider:



1. Switchers



2. How many cameras



3. Camera Control



4. Windows & Layouts



5. Streaming, Recording, & Conferencing

### Various Applications to use with **CAST**

#### Education



- Lecture Capture
- Hybrid Classroom
- Panel Discussions

#### Corporate



- Hybrid Meetings
- Online Presentations
- Training

#### Government



- Board Meetings
- City Council
- Public Hearings

#### House of Worship



- HOW Services
- Funerals
- Online Classes
- Weddings

# 1. Switchers



**CAST 10 NDI**



## 5-Channel Hybrid Event Switcher



- A hybrid event switcher designed for classroom, lecture capture, conferencing with all the I/O needed for producing, streaming, recording, and conferencing with Zoom, MS Teams, and other platforms.
- An intuitive touch screen interface with presets for screen layout settings, camera angles, and buttons for activating the stream and recording of your event.

## TPC-700PoE



Touch Panel Controller with PoE

## 2-Channel 4K Presentation Switcher

**CAST mini**

- A presentation switcher designed for classrooms, video conferences, and corporate training with all the I/O needed to output stunning 4K video to a large display or projector and conferencing applications such as Zoom and MS Teams.
- An intuitive touch screen interface provides one touch control for source switching, picture-in-picture, camera presets, and camera auto tracking.



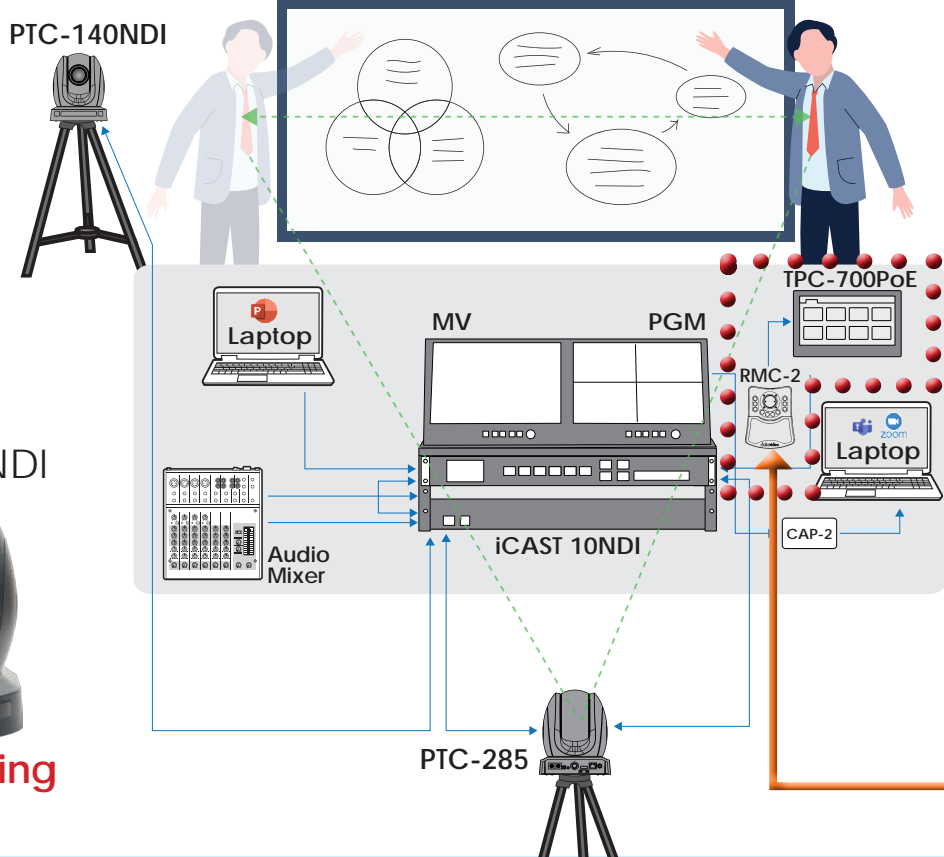
Auto Tracking  
Camera On/Off



# 2. How Many Cameras



## CAST 10 NDI Up to 2-4 Cameras



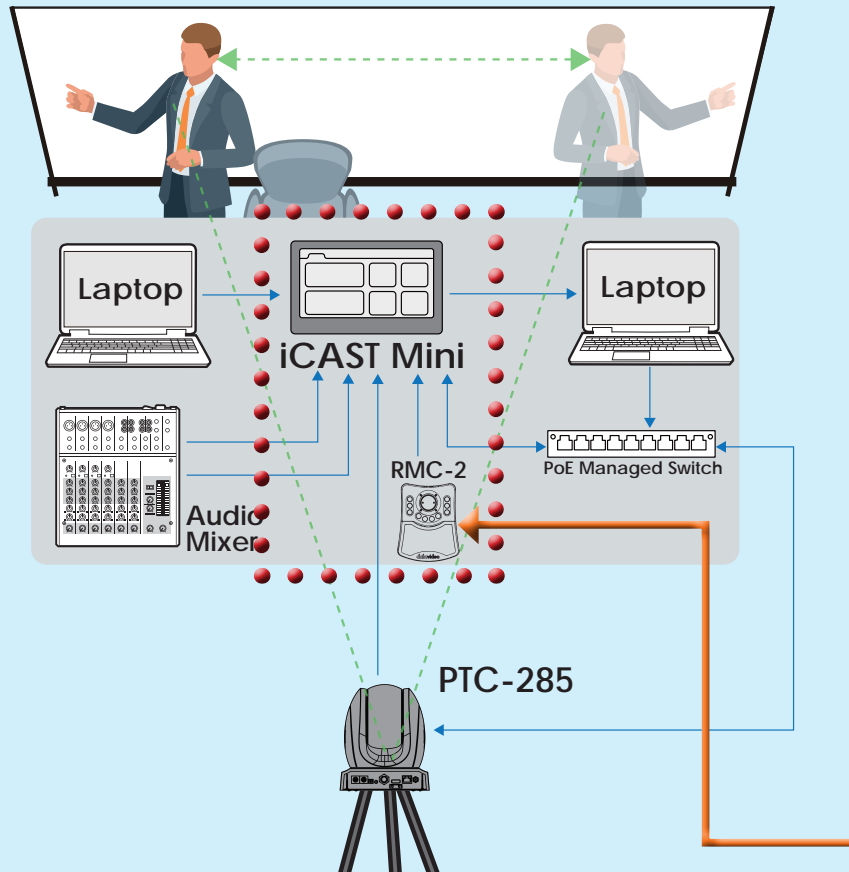
Auto Tracking

Auto Tracking

## CAST mini One Camera



or



# 3. Camera Control

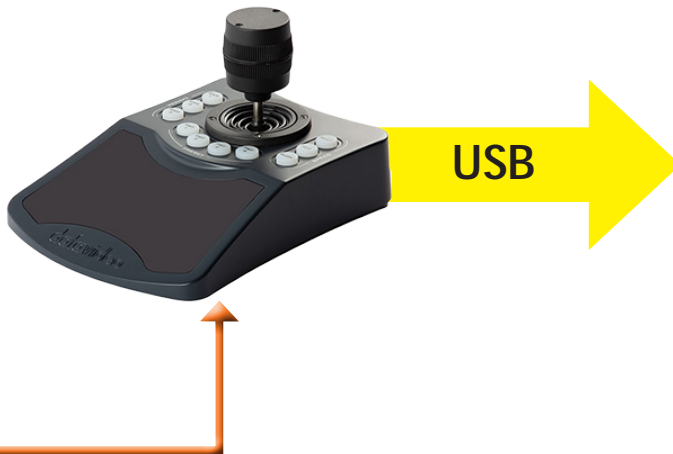


## Control Up to 4 PTZ Cameras



- Control cameras with a physical joystick by plugging in the RMC-2 controller to TPC-700
- Start the auto tracking on up to 4-cameras by selecting the "auto tracking" button on the TPC-700 interface
- TPC-700 can control other aspects of the camera such as iris, focus, presets, and virtual joystick

**RMC-2**  
3 Camera Controller

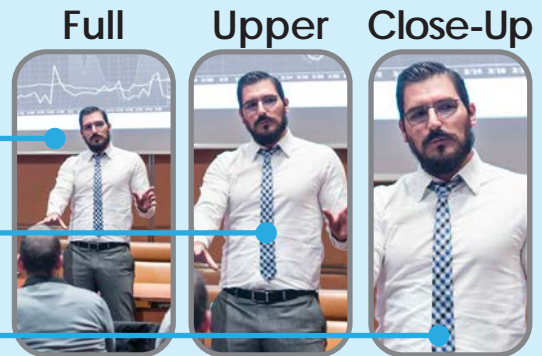


**TPC-700PoE**



## Instantly Switch Camera's Tracking Mode

**iCAST mini**



- iCast Mini can turn the auto tracking feature on which allows body composition for **full, mid-shot, or close-up**
- RMC-2 camera controller can be connected to iCAST mini to set up preset shots
- Preset shots are represented with thumbnails on the iCAST mini interface

**RMC-2**



# 4. Windows & Layouts



## Instantly Switch from Camera to Presentation Software

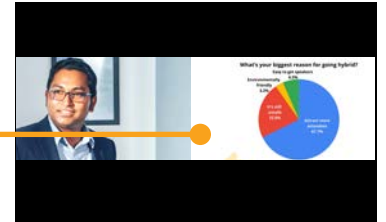
- The presenter can select various layouts from TPC-700 including PIP, side-by-side, quad view and Picture out of Picture
- With TPC-700 you can change which video source is represented in the various window configurations
- Custom PIP can be easily sized and positioned with TPC-700



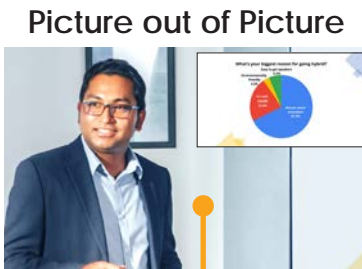
Quad View



TPC-700PoE



Side by Side



Picture out of Picture

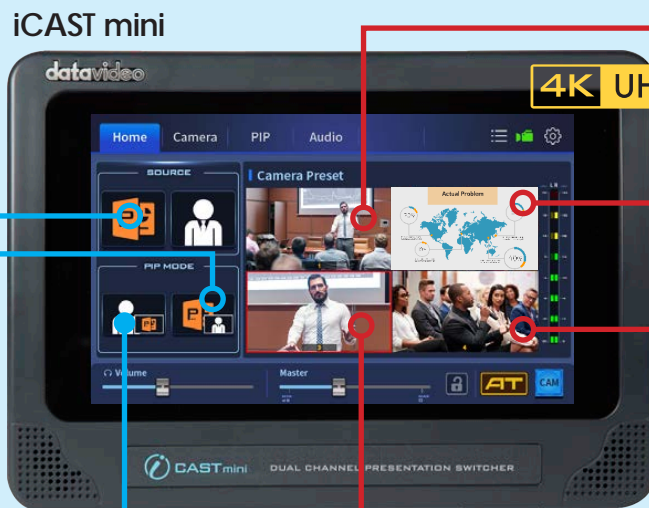
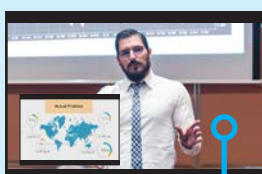
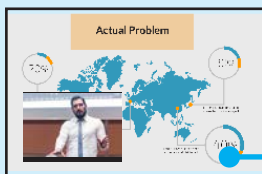
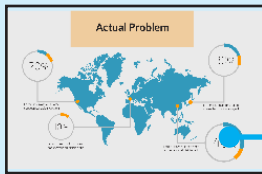


Picture out of Picture

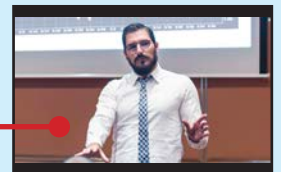
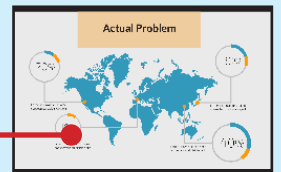


## Instantly Switch Layout

- iCast mini allows you to switch between video camera source and laptop input (presentation program)
- Select PIP options with with one-touch interface
- Presets are easily accessible and visible with the thumbnail representation of the camera position.



iCAST mini



Video & PIP MODE

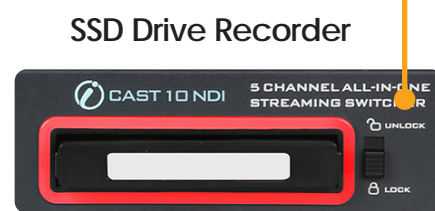
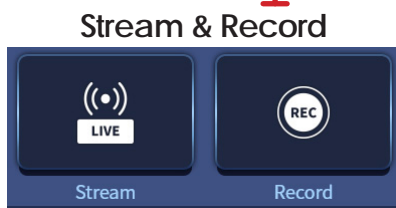
Presets

# 5. Streaming, Recording, & Conferencing



## Easily Record & Stream Multiple Channels

- A backlit LED button will light up indicating streaming and recording status.
- A red indicator means that the video is being recorded and a green indicator appears when the record function enters standby mode.



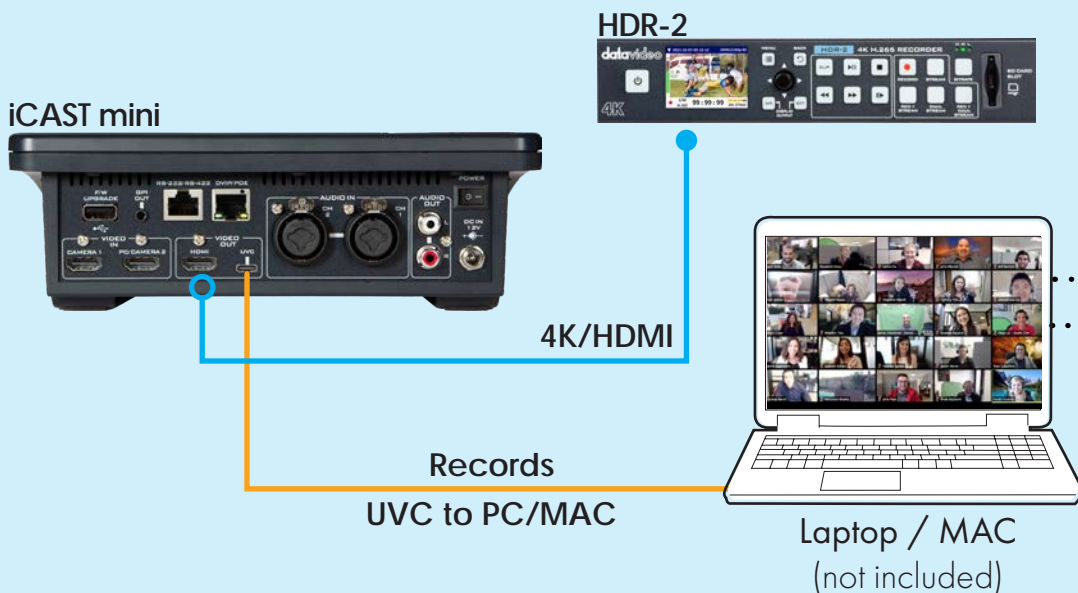
&



## Easily Record Meetings Online Presentations



An easy-to-use touch panel interface allows the presenter to switch between cameras, presentation slides, and multiple layouts; as well as control the cameras and adjust audio levels.



or

