

## Product Specifications

### Camera

- Sony super-low-light 8M pixel sensor, clear and natural imaging in low-light conditions, providing ultra FHD image quality
  - Resolution: (16:9) 1920 x 1080, 1280 x 720 at 60, 30, 15fps; 1600 x 900, 960 x 540, 848 x 480, 800 x 448, 640 x 360, 424 x 240, 320 x 180 at 30, 15fps; (4:3) 1280 x 960, 800 x 600, 640 x 480, 480 x 360, 320 x 240 at 30, 15fps
  - SmartFrame for automatic FOV adjustment to fit all participants
  - Smart Composition function offers great visibility for individual participant in the meeting room
  - Innovative Preset Framing: Follow presenter based on preset areas
  - WDR: Superb backlight compensation technology for optimizing light balance in high-contrast conditions
  - Zoom: 36X\* total zoom (12X optical zoom)
  - Field of view(D/H/V): 80.5°/72.8°/44.1°
  - Lens focal length: 3.9 mm (wide) ~ 46.8 mm (tele)
  - Lens F#: 1.6 (wide) ~ 2.8 (tele)
  - Mirror, flip, AE, white balance: auto/manual override via PTZApp 2
  - Minimum focus distance: 1m
  - Standard tripod screw holes and Kensington slot
  - People-counting API: enterprises and third-party software providers can obtain people-counting data for better understanding of meeting-space usage
- \*Please use PTZApp 2 to set up 36X zoom.

### Motorized Pan & Tilt Movement

- Pan: ±170°
- Tilt: +90° (up) -30° (down)
- 10 camera presets (via remote control)
- Fast and quiet pan & tilt movement

### Video Format

- YUV, YUY2, MJPEG
- Network video compression format: H.264
- Network protocol: RTSP, RTMP

### Control

- IR remote control
- VISCA/pelco P/pelco D via RS232 (128 preset points via VISCA command)
- Remote side: VISCA over IP, IP (RJ45)
- UVC plug and play
- WebUI: Browser IP access via Chrome (Does not support Internet Explorer)
- PTZApp 2

### Connectivity

- 12V/2A power adaptor
- Mini DIN9 for RS232 in & out connection (VISCA control panel and camera daisy chain)
- USB 3.1 type-B
- IP (RJ45)
- HDMI 1.4

### USB

- 3.1 Gen 1 Type-B, backward compatible with USB 2.0
- UVC 1.1 (USB video), UVC1.5\*
- \* UVC1.5 requires an additional firmware upgrade. Please contact technical support for more details.

### Mount

- Camera wall-mount bracket included
- Optional foldable TV mount
- Optional ceiling mount

### System Requirements

- Windows® 7/10/11
- Mac OS X10.14 or later
- Google Chromebox 3 version 94.0.4606.114 or later

### PC Hardware Requirement

- 3.2 GHz Intel® Core™ i5-4460 processor
- 8 GB RAM or more
- USB 3.1 port , backward compatible with USB2.0 port

### Environmental Data

- Operation temperature: 0 ~ 40°C
- Operation humidity: 20% ~ 80%
- Storage temperature: -20 ~ 60°C
- Storage humidity: 20% ~ 80%

### Dimensions

- Package dimensions: 256 x 256 x 274 mm
- Package weight: 3.335 kg/7.35 lbs
- Camera: 182 x 142.7 x 153 mm/1.47 kg
- Remote control: 200 x 50 x 21 mm/0.09 kg

### Optional Accessories

- Mini DIN8 to D-SUB9 RS232 adapter
- USB3.1, 3m type-B to type-A cable
- HDMI Cable
- Ceiling mount
- 1-Port POE+ Injector
- Foldable TV mount

### Web page browser requirement

- Chrome: version 76.x or above
- Firefox: version 69 or above
- IE: Not support

### Power Supply

- AC 100V ~ 240V, 50/60 Hz
- Consumption: 12V, 2A
- PoE+: 802.3at

### Free Applications for Meeting Collaboration (Windows® and Mac®)

- EZManager 2: Camera Central Management software**
  - Remotely manage group FW/SW updates, camera control, and settings

### PTZApp 2

- Support Virtual Streaming function.
- Smart gallery\*/Virtual USB streaming/ Preset Link
- Upgrade firmware automatically or manually
- Control camera
- Set parameters and adjust camera image
- Diagnose operating status
- View live video

### EZLive

- Annotating / Image capturing / Video recording
- \*Will be supported in future update

### Package Contents

- CAM520 Pro3 unit
- Remote control
- 5m, USB2.0 type-B to type-A cable
- Power adapter (10 ft/3 m)
- QR code card
- Wall-mount bracket
- ¼" tripod screw
- Mini DIN9 to mini DIN8 RS232 adapter

### Warranty

- Camera: 3 years\*
- Accessories: 1 year

\*We offer an optional 2-year extended warranty in Europe. Please contact your local supplier for details.

### Compatible Applications

Zoom, Microsoft® Teams, Skype for Business, Skype, Google Meet, Intel® Unite™, RingCentral, BlueJeans, V-Cube, LiveOn, CyberLink U Meeting®, TrueConf, Adobe® Connect™, Cisco WebEx®, Fuze, GoToMeeting™, Vido, vMix, WebRTC, Wirecast, XSplit

\*\* Specifications may vary depending on countries and are subject to change without notice.

## Product Appearance

### Front Panel



H182 x W142.7 x D153 mm

### Back Panel



HDMI out  
USB 3.1 type-B  
RS232 in/out  
LAN for IP streaming and POE+  
DC 12V

Distributor/Dealer



©2024 AVer Information Inc. All rights reserved.  
All brand names and logos are trademarks of their respective companies.

www.aver.com



202408



# CAM520 Pro3

Professional USB 3.1 Conferencing Camera for Mid-to-Large Rooms



# Masterful Navigating and Presenting

The AVer CAM520 Pro3 is extremely versatile, offering users a 36X total zoom PTZ camera, upgraded AVer SmartFrame, Preset Framing, and a Sony WDR Sensor. In addition, 3-way outputs – including an HDMI connection – deliver more streaming options. But what makes the CAM520 Pro3 truly special is Smart Composition, an embedded AI function that quickly captures meeting participants' images to facilitate productive video conferences in mid-to-large meeting rooms.



1080P  
Full HD

Full HD 1080p



Smart  
Composition



Present  
Every Detail



Efficient and  
Safe Meetings



Enterprise-Grade  
Imaging

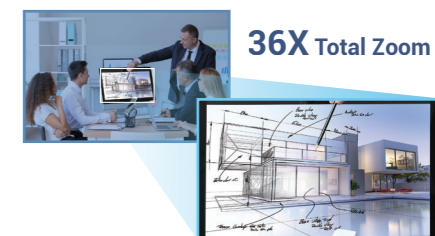


HDMI Enables  
Dual Display  
and 3-Way Output

## Master the Details with a 36X\* Total Zoom Lens and Boost Your Business

Create error-free meetings with the CAM520 Pro3 PTZ lens. Capture wide shots with an 80° diagonal field of view, and focus on presenters, attendees, content on whiteboards, or physical objects with flexible pan and tilt controls. Powerfully handle every detail with a 12X optical lens and a 36X\* total zoom. Additionally, the CAM520 Pro3 uses 24X lossless zoom to deliver outstanding clarity to remote participants, making it the ideal conferencing camera for mid-to-large rooms!

\*Use PTZApp 2 to set up 36X zoom



## Accurately Capture Attendees with AVer Smart Composition to Access Layout Flexibility

The CAM520 Pro3 is one of the first PTZ cameras in the video conferencing industry to include a Smart Composition function – a feature typically reserved for higher-end devices. Smart Composition uses an AI algorithm to automatically crop each participant's face or body in a perfect frame. This is a click-to-play feature that doesn't require any software to set up! Smartly integrate headshots and half-body views, and smoothly convert from an individual visual to a group image. The CAM520 Pro3 delivers high-definition views of participants for stress-free meeting setups and ultimate productivity.

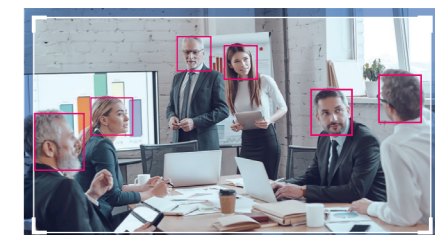
\*Works for up to 9 people



## More Efficiency and Security with Upgraded AVer SmartFrame

With enhanced SmartFrame, AVer's CAM520 Pro3 elevates your meeting efficiency and safety. This AI technology automatically focuses on participants, working effortlessly from an impressive distance of up to 7 meters away – even when people are wearing masks!

The CAM520 Pro3 also provides a Preset Framing mode that efficiently follows presenters through preset areas. By setting multiple preset viewing areas, you can make the camera automatically shift as the presenter moves without any manual control!



## HDMI Enables Dual Display and 3-Way Output, Creating Diverse Display Options

Simultaneously presenting in 1080p/60fps via HDMI and USB 3.1 streaming or RTSP/RTMP H.264 broadcasting, the CAM520 Pro3 lets you use a 2nd display for virtual meetings. These connection options allow you to create seamless hybrid meeting experiences for your business.



## Enjoy Enterprise-Grade Imaging with No limits

The CAM520 Pro3 provides lifelike meetings even in high-contrast backlight environments – such as meeting rooms with too much sunlight pouring in. By applying its Sony sensor and advanced image-tuning algorithm, the CAM520 Pro3 automatically refines highlights, shadows, and white balance. Furthermore, with AVer Virtual Streaming technology, you can use the CAM520 Pro3 as a video source for virtual meetings through a single Ethernet connection. Additionally, a PoE+ port streamlines the setup process and reduces installation expenses. You deserve to experience enterprise-grade imaging in every meeting.

