



D2-BASE-EXT  
Camera Housing  
For PTZ Camera Series  
**Instruction Manual**

## Contents

<b>FCC COMPLIANCE STATEMENT .....</b>	<b>3</b>
<b>WARNINGS AND PRECAUTIONS .....</b>	<b>3</b>
GLASS – HANDLE WITH CARE.....	4
<b>WARRANTY.....</b>	<b>4</b>
STANDARD WARRANTY .....	4
REGISTER FOR 3 YEAR WARRANTY .....	4
DISPOSAL .....	4
PACKING LIST .....	5
<b>PRODUCT OVERVIEW .....</b>	<b>6</b>
FEATURES.....	6
<b>ASSEMBLY – D2-BASE-EXT .....</b>	<b>7</b>
REQUIRED TOOLS.....	7
STEPS TO ASSEMBLE .....	7
<b>DIMENSIONS.....</b>	<b>11</b>
<b>SPECIFICATIONS .....</b>	<b>11</b>
<b>SERVICE AND SUPPORT .....</b>	<b>12</b>

### Disclaimer of Product and Services

The information offered in this instruction manual is intended as a guide only. At all times, Datavideo Technologies will try to give correct, complete and suitable information. However, Datavideo Technologies cannot exclude that some information in this manual, from time to time, may not be correct or may be incomplete. This manual may contain typing errors, omissions or incorrect information. Datavideo Technologies always recommend that you double check the information in this document for accuracy before making any purchase decision or using the product. Datavideo Technologies is not responsible for any omissions or errors, or for any subsequent loss or damage caused by using the information contained within this manual. Further advice on the content of this manual or on the product can be obtained by contacting your local Datavideo Office or dealer.

## FCC Compliance Statement

This device complies with part 15 of the FCC rules. Operation is subject to the following two conditions:

1. This device may not cause harmful interference, and
2. This device must accept any interference received, including interference that may cause undesired operation.

## Warnings and Precautions



1. Read all of these warnings and save them for later reference.
2. Follow all warnings and instructions marked on this unit.
3. Unplug this unit from the wall outlet before cleaning. Do not use liquid or aerosol cleaners. Use a damp cloth for cleaning.
4. Do not use this unit in or near water.
5. Do not place this unit on an unstable cart, stand, or table. The unit may fall, causing serious damage.
6. Slots and openings on the cabinet top, back, and bottom are provided for ventilation. To ensure safe and reliable operation of this unit, and to protect it from overheating, do not block or cover these openings. Do not place this unit on a bed, sofa, rug, or similar surface, as the ventilation openings on the bottom of the cabinet will be blocked. This unit should never be placed near or over a heat register or radiator. This unit should not be placed in a built-in installation unless proper ventilation is provided.
7. This product should only be operated from the type of power source indicated on the marking label of the AC adapter. If you are not sure of the type of power available, consult your Datavideo dealer or your local power company.
8. Do not allow anything to rest on the power cord. Do not locate this unit where the power cord will be walked on, rolled over, or otherwise stressed.
9. If an extension cord must be used with this unit, make sure that the total of the ampere ratings on the products plugged into the extension cord do not exceed the extension cord rating.
10. Make sure that the total amperes of all the units that are plugged into a single wall outlet do not exceed 15 amperes.
11. Never push objects of any kind into this unit through the cabinet ventilation slots, as they may touch dangerous voltage points or short out parts that could result in risk of fire or electric shock. Never spill liquid of any kind onto or into this unit.
12. Except as specifically explained elsewhere in this manual, do not attempt to service this product yourself. Opening or removing covers that are marked "Do Not Remove" may expose you to dangerous voltage points or other risks, and will void your warranty. Refer all service issues to qualified service personnel.
13. Unplug this product from the wall outlet and refer to qualified service personnel under the following conditions:
  - a. When the power cord is damaged or frayed;
  - b. When liquid has spilled into the unit;
  - c. When the product has been exposed to rain or water;
  - d. When the product does not operate normally under normal operating conditions. Adjust only those controls that are covered by the operating instructions in this manual; improper adjustment of other controls may result in damage to the unit and may often require extensive work by a qualified technician to restore the unit to normal operation;
  - e. When the product has been dropped or the cabinet has been damaged;
  - f. When the product exhibits a distinct change in performance, indicating a need for service.

## GLASS – Handle with Care



This product contains a sheet of 50/50 mirror glass please handle it with care.

To avoid a risk of damage or injury please follow this instruction manual and use caution when transporting, un-packing, cleaning, assembling or dis-assembling this part of the product.

## Warranty



### Standard Warranty

- Datavideo equipment are guaranteed against any manufacturing defects for one year from the date of purchase.
- The original purchase invoice or other documentary evidence should be supplied at the time of any request for repair under warranty.
- The product warranty period begins on the purchase date. If the purchase date is unknown, the product warranty period begins on the thirtieth day after shipment from a Datavideo office.
- All non-Datavideo manufactured products (product without Datavideo logo) have only one year warranty from the date of purchase.
- Damage caused by accident, misuse, unauthorized repairs, sand, grit or water is not covered under warranty.
- Viruses and malware infections on the computer systems are not covered under warranty.
- Any errors that are caused by unauthorized third-party software installations, which are not required

by our computer systems, are not covered under warranty.

- All mail or transportation costs including insurance are at the expense of the owner.
- All other claims of any nature are not covered.
- All accessories including headphones, cables, and batteries are not covered under warranty.
- Warranty only valid in the country or region of purchase.
- Your statutory rights are not affected.

### Register for 3 Year Warranty

- All Datavideo products purchased after July 1st, 2017 are qualified for a free two years extension to the standard warranty, providing the product is registered with Datavideo within 30 days of purchase.
- Certain parts with limited lifetime expectancy such as LCD panels, DVD drives, Hard Drive, Solid State Drive, SD Card, USB Thumb Drive, Lighting, Camera module, PCIe Card are covered for 1 year.
- The three-year warranty must be registered on Datavideo's official website or with your local Datavideo office or one of its authorized distributors within 30 days of purchase.

## Disposal

### For EU Customers only - WEEE Marking



This symbol on the product or on its packaging indicates that this product must not be disposed of with your other household waste. Instead, it is your responsibility to dispose of your waste equipment by handing it over to a designated collection point for the recycling of waste electrical and electronic equipment. The separate collection and recycling of your waste equipment at the time of disposal will help to conserve natural resources and ensure that it is recycled in a manner that protects human health and the environment. For more information about where you can drop off your waste equipment for

recycling, please contact your local city office, your household waste disposal service or the shop where you purchased the product.

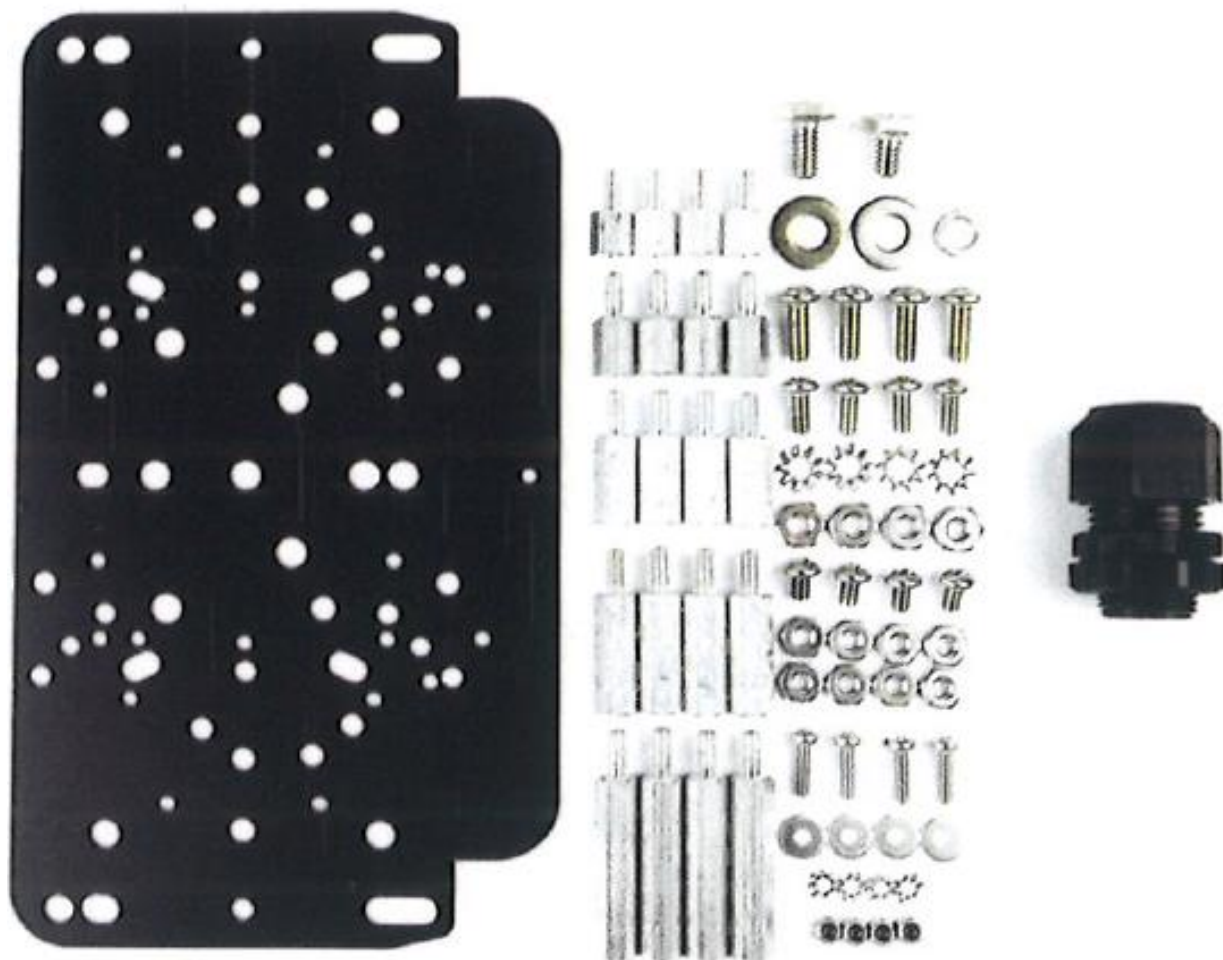


**CE Marking** is the symbol as shown on the left of this page. The letters "CE" are the abbreviation of French phrase "Conformité Européenne" which literally means "European Conformity". The term initially used was "EC Mark" and it was officially replaced by "CE Marking" in the Directive 93/68/EEC in 1993.

"CE Marking" is now used in all EU official documents.

## Packing List

No.	Part Number	QTY
1	Camera Bracket Mount Plate	1
2	0.5" Standoffs (8-32)	4
3	0.75" Standoffs (8-32)	4
4	1.0" Standoffs (8-32)	4
5	1.5" Standoffs (8-32)	4
6	0.25" Washer	2
7	0.25" Lockwasher	1
8	0.25"-20 $\frac{3}{8}$ " Long Bolt (7/16 Socket Wrench)	1
9	#10-32 $\frac{1}{2}$ " Long Screw (Philips Head)	2
10	#10 External Lockwasher	2
11	#10-32 Hex Nut	2
12	#8-32 $\frac{3}{8}$ " Long Screw (Philips Head)	4
13	#8-32 Hex Nut	4
14	M3-0.5 $\frac{1}{2}$ " Long Screw	4
15	M3 External Lockwasher	4
16	M3 $\frac{1}{8}$ " Washer	4
17	M3 Locknut	4



## Product Overview

The **Datavideo D2-BASE-EXT** is a robust outdoor housing system specifically engineered for fast installation of Datavideo PTZ cameras, utilizing a **PoE+ powered housing solution**. This creates a fully integrated, rugged outdoor system.

The **virtually indestructible housing** is designed to withstand a wide range of harsh environments. With an **IP68 NEMA 4X protection level**, it offers the highest level of protection against water, dust, marine conditions, and vandalism, ensuring long-lasting durability in extreme outdoor conditions.

## Features

- Designed specifically for Datavideo PTZ cameras
- A streamlined design that facilitates power and data transmission through a single Ethernet cable via PoE+
- An external RJ-45 quick-connect with an IP67-rated connector simplifies installation.
- Optional features include an integrated heater with thermostat control and a 10 CFM fan.
- The housing is vandal-resistant protection, while the external Ethernet connection is dustproof and waterproof, ensuring reliability.
- The installation process is straightforward, ensuring compatibility with various setups.

## Assembly – D2-BASE-EXT

### Required Tools



Power Drill



9/16 Socket



Flat Head Screwdriver



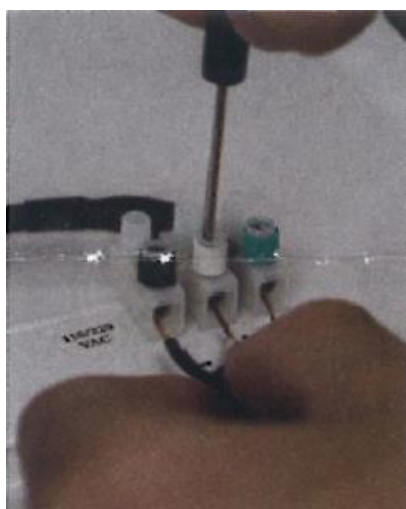
Level

### Steps to Assemble



#### Step 1. Loosen Screws to Open D2-BASE-EXT

Use a Philips Head screwdriver to loosen all 11 self-retaining machine screws on the D2-BASE-EXT.



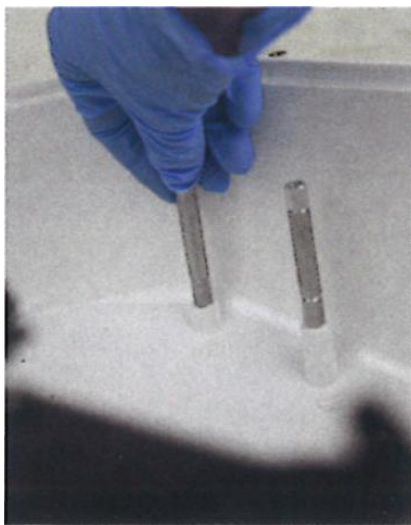
#### Step 2. Install Power Cables into Terminal Block

Using the included flathead screwdriver, loosen the screws on the terminal block. Insert the color-coordinated wires and then tighten the screws back down.

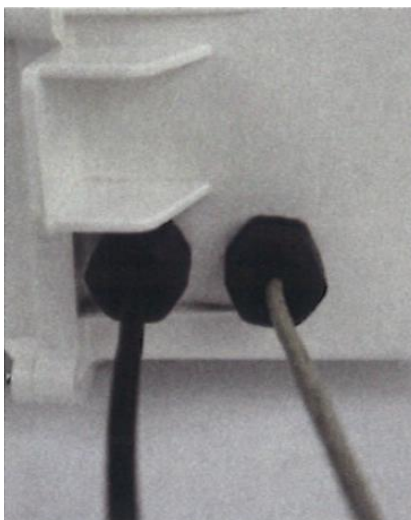
***All connections must be made by a licensed electrician.***

**Step 3. Connect Camera Power**

If you have purchased an MVP model, connect the included barrel connector or PoE power to your camera.

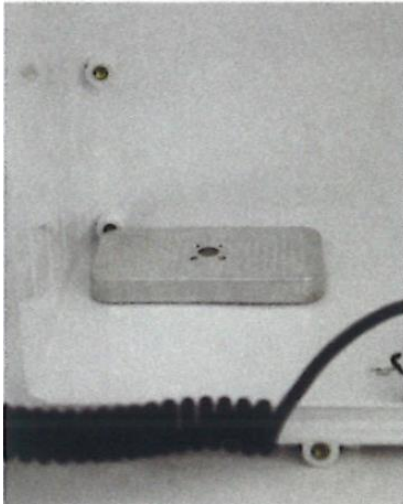
**Step 4. Install Camera Standoffs**

For cameras smaller than 6.375 inches, position the camera against the lens. For larger cameras, install the standoffs in the lid of the housing and mount the camera onto the standoffs, ensuring proper spacing from the lens.

**Step 5. Install Power and Data Cables**

Attach the included cable gland to your power and data cables. Insert the cable gland into the housing, ensuring the seal nut is on the outside, and then tighten the locking nut on the inside.

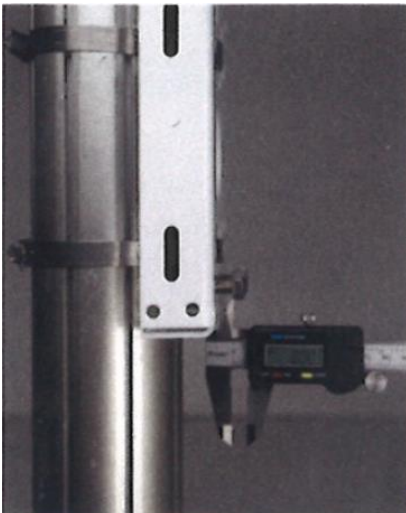


**Step 6. Install the Desiccant Pack**

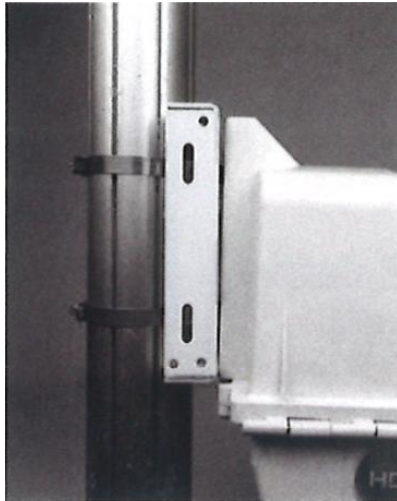
Unwrap the provided desiccant pack and place it inside the housing in a position that will not interfere with the camera for optimal results.

**Step 7. Choose the Appropriate Mount if Needed**

The D2-BASE-EXT is compatible with a variety of mounts. Visit the [Dotworkz e-store](#) to select the right one for your application. If required, these mounts can also be used with lag bolts.

**Step 8. Install the Bottom Two Bolts Only**

Using a 9/16 socket, tighten only the bottom two bolts until 4 threads (approximately 8 mm) are exposed.



**Step 9. Slot the Bottom of the D2-BASE-EXT onto the Bottom Two Bolts**

Align the bottom two slots of the D2-BASE-EXT with the bottom two bolts and allow the D2-BASE-EXT to hang securely on them.



**Step 10. Install the Top Two Bolts in the D2-BASE-EXT**

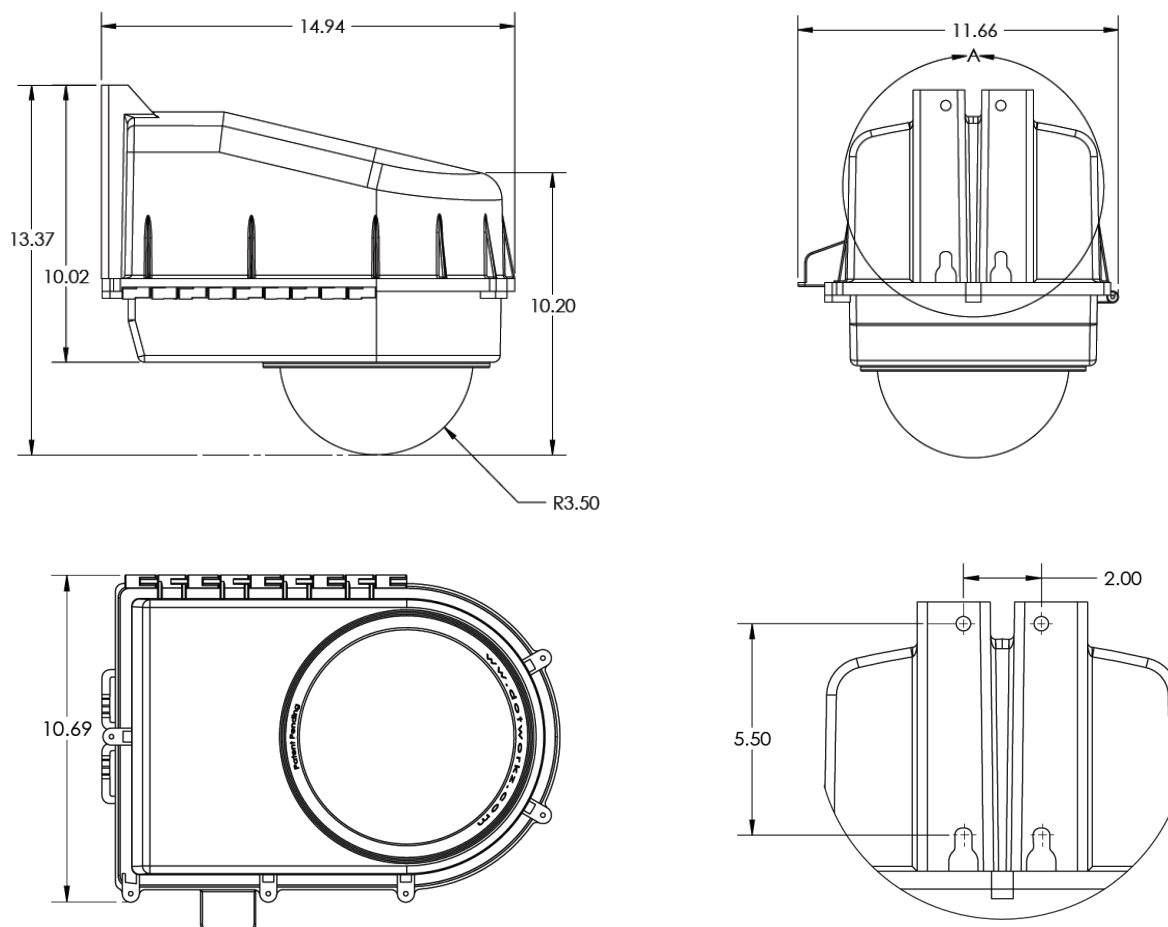
Tighten the top two bolts of the D2-BASE-EXT to a torque of 4 lbf-ft.



**Step 11. Close Up the Housing**

Secure all 11 machine screws, making sure that the bubble lens does not contact the camera.

## Dimensions



All measurements in millimetres (mm)

## Specifications

<b>Ring of Fire</b>	<b>Extreme Cold:</b> Capable of operating in temperatures as low as -60 °F (-51°C) with de-icing.
<b>Heater Blower</b>	<b>Variable Temperature Range:</b> Functional within a range of -25 °F (-32°C) to 122 °F (50°C).
<b>CoolDome</b>	<b>Extreme Heat:</b> Designed to withstand temperatures as high as 167 °F (75°C) with active cooling.
<b>Tornado</b>	<b>Humidity Tolerance:</b> Can operate in conditions up to 140 °F (60°C) and 95% humidity.
<b>Solar</b>	<b>Low Wattage Range:</b> Operates efficiently from 30 °F (-1°C) to 95 °F (35°C).
<b>Base</b>	<b>Standard Temperature Range:</b> Suitable for environments ranging from 50 °F (10°C) to 85 °F (30°C).

## Service & Support

It is our goal to make owning and using Datavideo products a satisfying experience. Our support staff is available to assist you to set up and operate your system. Contact your local office for specific support requests. Plus, please visit [www.datavideo.com](http://www.datavideo.com) to access our FAQ section.

Please visit our website for latest manual update.



@DatavideoUSA @DatavideoIndia2016  
@DatavideoEMEA @Datavideojapan  
@DatavideoTaiwan @DatavideoLatam  
@DatavideoAsia @DatavideoBrasil



@Datavideo  
@Datavideo\_EMEA  
@Datavideo\_Taiwan



@DatavideoUSA  
@DVTWDDCN



@DatavideoUSA  
@DatavideoEurope

All the trademarks are the properties of their respective owners.

Oct-09.2024  
E1