

datavideo



HD 30x Tracking PTZ Camera

**PTC-155/
PTC-155T**

www.datavideo.com

The All-New AI PTZ Camera Series

The PTC-155 Series is Datavideo's latest AI-powered auto-tracking PTZ camera. Featuring a 1/2.8" CMOS sensor and 30x optical zoom, it is specifically designed for use in large performance halls, classrooms, conference rooms, and similar venues.

The PTC-155 Series includes a dual-lens camera system, delivering precise and reliable tracking capabilities. The dual-lens camera also supports ultra-wide-angle HD output, catering to diverse scene requirements. With its AI tracking system and support for professional camera controllers or remote controls, it offers smooth and natural shooting, comparable to a professional cameraman.

Equipped with a broadcast-grade 1/2.8-inch CMOS sensor, the PTC-155 Series can output high-quality 1920x1080 60P images. Its progressive scan technology ensures fine and clear details, maintaining stability even in dynamic environments.

The PTC-155 Series supports multiple video output interfaces, including SDI, HDMI, and UVC, and features built-in H.264, H.265, and Motion JPEG encoding. This allows real-time streaming to up to two platforms simultaneously, meeting both live and online playback needs.

The PTC-155 also supports NDI|HX3 functionality, enabling seamless integration into NDI workflows and delivering low-latency, high-quality video output in NDI application scenarios. Whether for live production or remote transmission, the PTC-155 provides flexibility and efficiency.

An added SD card recording feature offers a backup option, allowing users to easily access recordings via a software, providing extra security for important moments. For audio, the PTC-155 supports 3.5mm microphone and line-in audio formats, with mixing control and settings accessible via the Web UI to meet live audio needs. Additionally, besides DC power input, the PTC-155 supports PoE power supply, offering versatility for various system installations and on-site wiring requirements.

Datavideo also offers an HDBaseT version of the PTC-155T to meet diverse workflow needs. The PTC-155 Series is not only a reliable choice for professional video production but also provides a comprehensive solution for versatile application scenarios.



1. AI Auto-Tracking Functionality: The AI system, combined with a dual-lens camera, enables precise tracking and delivers smooth, natural footage.
2. Dual-Lens Camera Functionality: Supports precise tracking and ultra-wide-angle HD image output, suitable for various scenarios.
3. High-Quality Image Processing: Equipped with a broadcast-grade 1/2.8-inch CMOS sensor, supports 1920x1080 60P image output with stability and clarity.
4. 30x Optical Zoom and 16x Digital Zoom: Delivers clear images for both close-up and long-distance shots, ideal for wide-ranging applications.
5. Versatile Video Output and Real-Time Streaming: Supports SDI, HDMI, UVC, and multiple encoding formats for simultaneous live and online playback.

6. SD Card Recording Functionality: Supports SD card recording with easy access to footage via a software, providing a backup option.
7. NDI|HX3 Support: Seamlessly integrates into NDI workflows, offering low-latency and high-quality video output.
8. Comprehensive Control Support: Compliant with ONVIF Profile S and supports RS-422, DVIP, NDI, and Sony VISCA control protocols.
9. Free Remote Control and Operation: Includes a free iOS/Android app and a built-in web interface for convenient remote management.
10. Enhanced Audio Capabilities: Supports 3.5mm microphone and line-in audio inputs with mixing controls via the Web UI.
11. Flexible Power Supply and Installation: Supports both DC power and PoE, ensuring versatile installation options.
12. HDBaseT Model Option (PTC-155T): Offers an HDBaseT version to meet diverse workflow requirements.

PTC-155

NDI|HX3



PTC-155T

HDBaseT





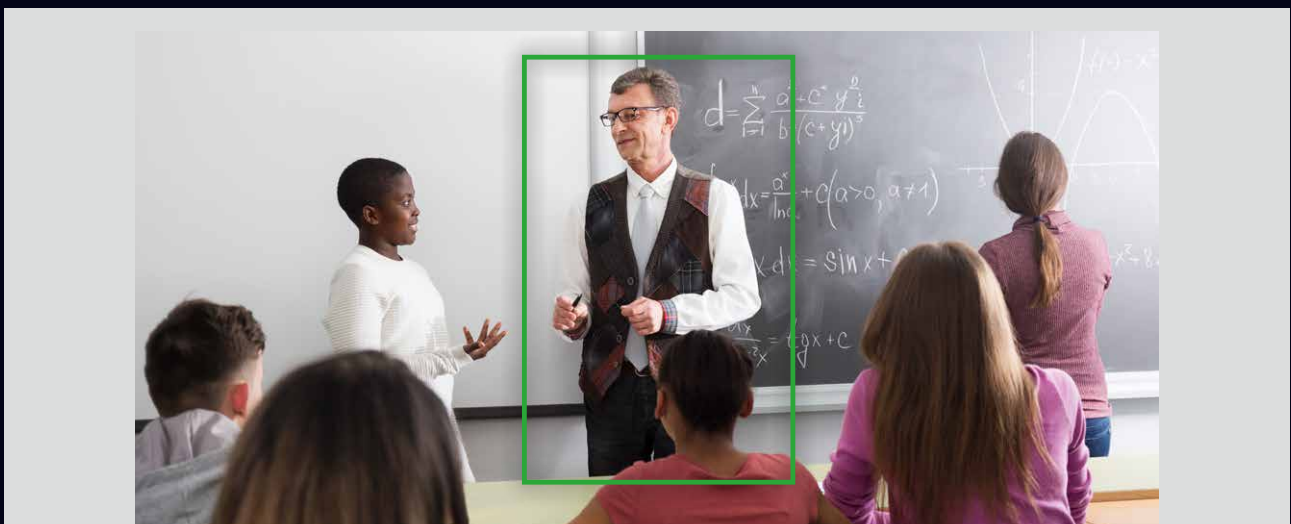
Quick Access to Camera's Auto Tracking

You have various camera controllers to turn on/off the auto tracking function of the camera, including the RMC-1AT remote controller, RMC-300A DVIP controller, PTC View Assist App, TPC-700, etc., you can choose a suitable controller according to your needs. In addition to the camera controller, you can quickly enable auto tracking with a video switcher that supports camera control functions, such as iCAST mini, KMU-200/300, or SHOWCAST 100.



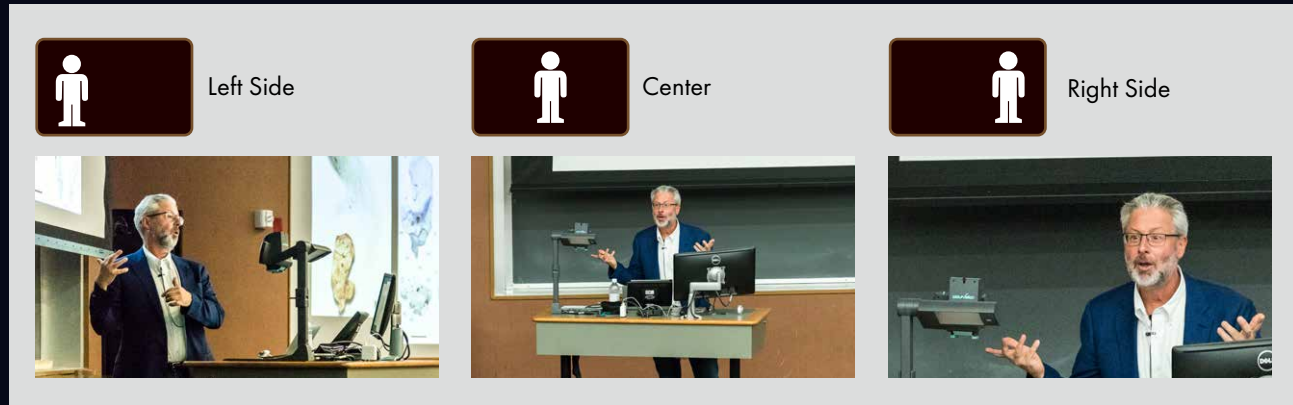
Custom Auto Object Tracking

If you are filming multiple people, you can designate a person for Auto tracking. Once linked to the camera, only the designated person will be tracked, avoiding interferences such as the desks, people coming back and forth, large objects, etc.



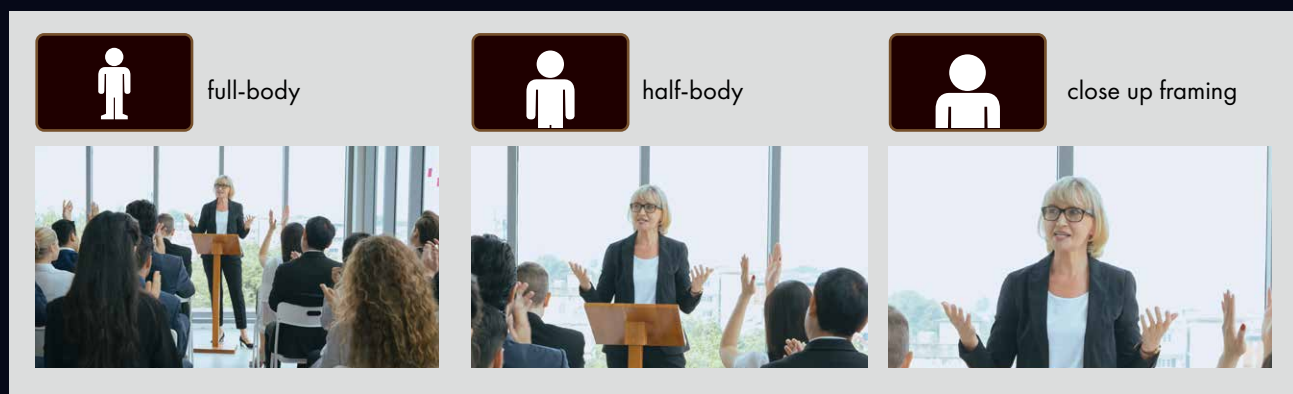
Talent Position: Center / Left Side / Right Side

The positioning of talent depends on the videographer's creativity and intent rather than strict rules. Different positions can convey various emotions, messages, or visual effects. A centered composition provides a sense of stability and balance, suitable for scenes that require highlighting the main subject. Videographers may also place the talent on the left third or right third of the frame, leaving adequate space in the foreground to showcase the talent's sight direction or potential future possibilities.



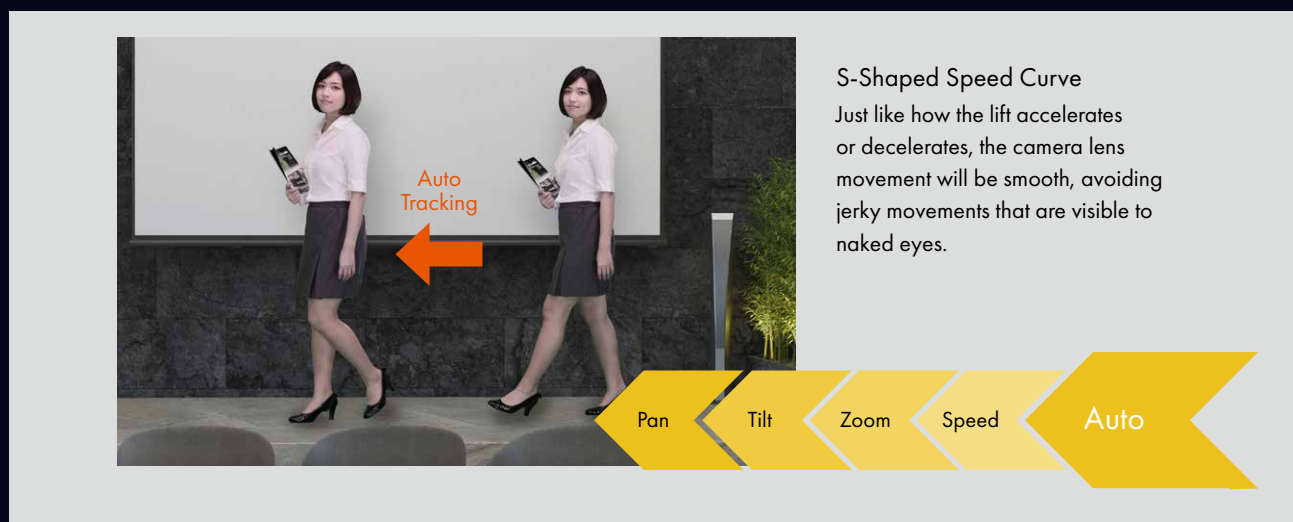
Quick Access to Framing Options

All of the PTC-155 camera series include RMC-1AT controller. User can quickly select full-body, half-body and close up framing, making it easy to change the shooting scene and framing requirements.



Smart PTZ Speed Adaptation

The integrated PID algorithm is able to detect the movement speed of the identified object and automatically adjust the camera's corresponding pan, tilt and zoom speeds in such a way that the lens movement will be smooth, avoiding common camera lens movement problems like jerky movements or unpredicted halts.



30X Optical Zoom 16X Digital Zoom

The PTC-155's 30X optical zoom and 16X digital zoom allows you to mount it near or far and still get great, sharp shots.



Optical Zoom



Digital Zoom

Using NDI® | HX Technology with Ethernet Cable

Eliminate the need for complex wiring— a single Ethernet cable handles video, audio, power, tally, and control signal transmission.

NDI[®] HX3

Dual-Lens Camera for Precise Tracking and Full Coverage

The dual-lens camera technology to accurately identify the subject's position and movement track. Even in complex environments, it ensures stable tracking. The secondary lens offers an ultra-wide-angle view, enabling output of HD footage of the entire scene.



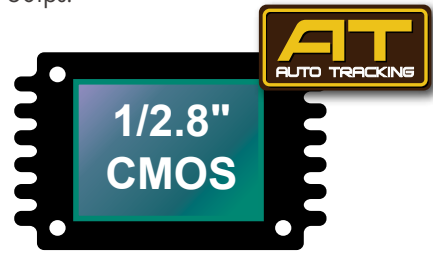
Low Noise in Low Light CMOS Effectively Ensures High SNR of Video Quality

Advanced 3D noise reduction technology is also used to further reduce the noise while ensuring image sharpness.



Broadcast Quality 1/2.8-inch CMOS Sensor

The PTC-155 is an AI auto-tracking PTZ camera featuring a 1/2.8-inch CMOS sensor and supports Full HD resolution at 1920x1080 60fps.



Multiple Control Protocols and Dual-Stream Live Broadcasting

Supports RTSP, RTMP(S), DHCP, TCP/IP, HTTP, and Multicast protocols. The PTC-155 Series cameras are fully compliant with the ONVIF Profile S standard, ensuring seamless integration and interoperability within networked video systems.

Easily encode and stream captured footage while simultaneously broadcasting to two different live streaming platforms.

Onvif[®] |



Supports Dual H.264/H.265 Video Compression for Streaming

Capable of dual-stream encoding at 1920x1080 resolution at 60P and 720x480 resolution at 30P, providing flexible options for live streaming and recording tasks. Video compression supports H.264 and H.265 formats, while audio compression supports AAC, MP3, and PCM formats.



Tally Light

Green and red tally lights to show the preview and program status for broadcast applications.



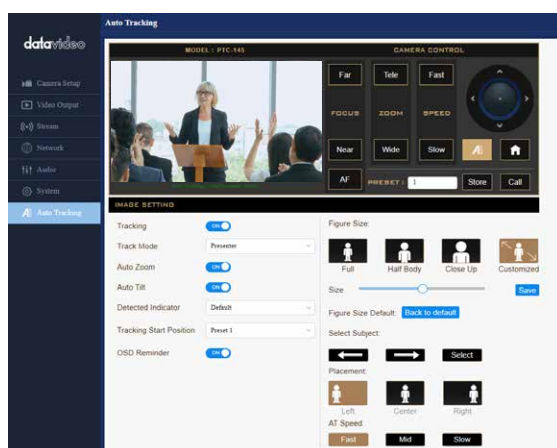
Simultaneous Output of Multiple Signal Formats

Supports SDI, HDMI, and UVC video output. Built-in H.264, H.265, and Motion JPEG encoding allows simultaneous live streaming to two platforms, meeting both on-site and online playback requirements.



Remote control and preview by web user interface

The web user interface provides preview, pan-tilt-zoom control and configurations setting in IP mode.



SD Card Recording Functionality

The PTC-155 Series features built-in SD card recording, offering a flexible and efficient solution for video recording and backup. Recorded footage can be accessed and downloaded via the software, enabling quick management of recording data without needing to physically interact with the device.



Various Control Options

Control real-time pan, tilt, and zoom camera movements with Datavideo SHOWCAST 100, iCAST mini switcher, PTZ View Assist APP, RMC-300A and RMC-180 camera controller series. With configurable preset positions supported.



RS-422, DVIP and Ethernet Camera Control

RS-422 and ethernet to use DVIP or VISCA over IP commands to integrate with larger control systems.



Dark Blue and White Color Models

PTC-155 is available in two colors, dark blue and white. Suitable for broadcast, worship, video conferencing and etc.





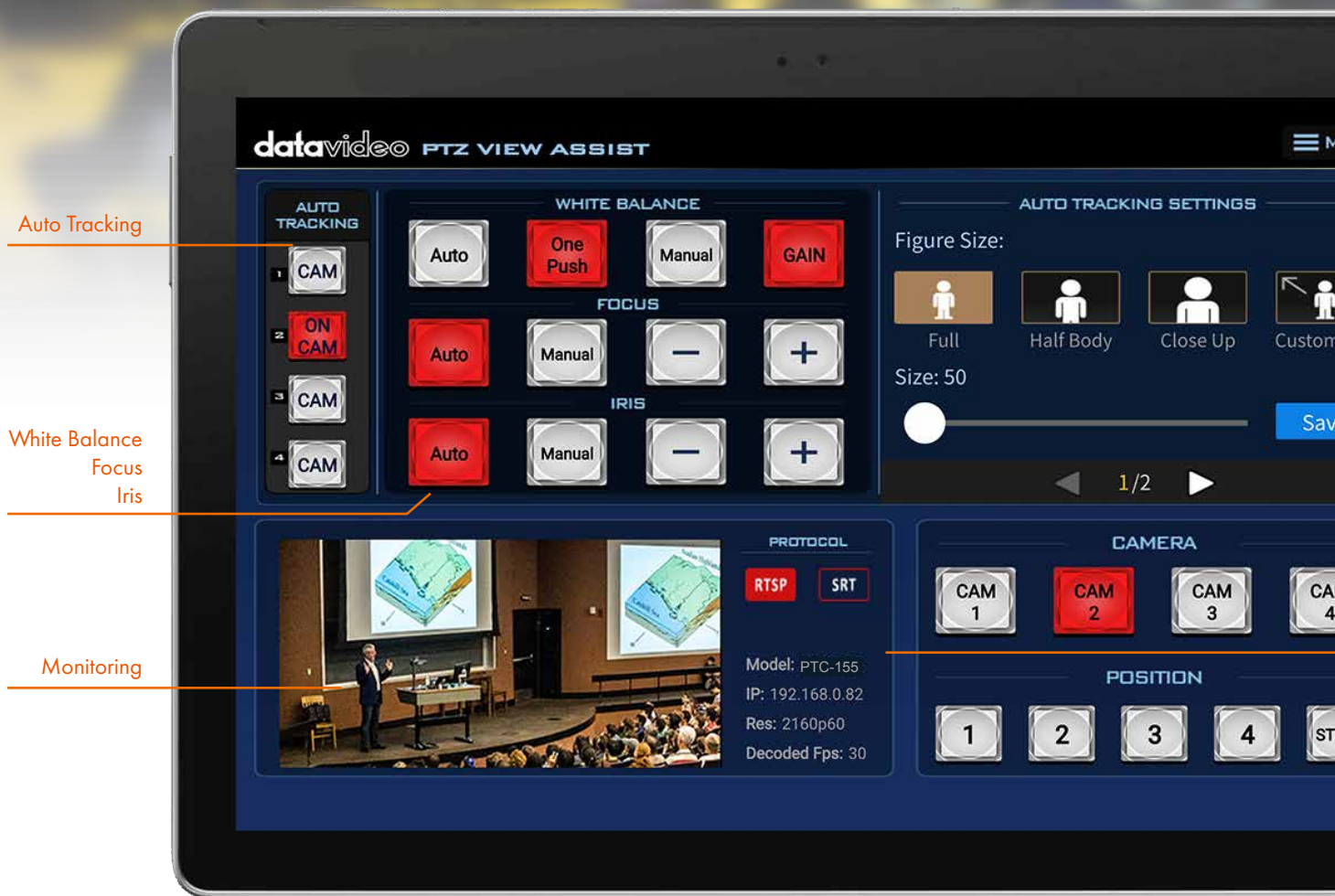
Simply enable AI tracking
with your IR remote control



RMC-1AT PTZ Controller

All you need is a remote control to set and control all four cameras and save the four presets.





PTZ View Assist

Control up to four cameras with your Tablet

The camera control app is tailored for the Datavideo PTZ camera series. It can monitor the live streaming video from PTC-140, PTC-145, PTC-155, PTC-280, PTC-285, PTC-300, PTC-305 and PTC-325 series. The app can control up to 4 cameras simultaneously via DVIP, you can intuitively set up and recall the presets, and adjust white balance, focus, and IRIS. The app can decode the live streaming via RTSP (SRT steaming coming soon), easily monitor the live streaming video and set up the parameters promptly in one application. Datavideo provides iOS and Android versions, you can download on Google Play and App Store for free!





Auto Tracking Setting

Camera

Protocol

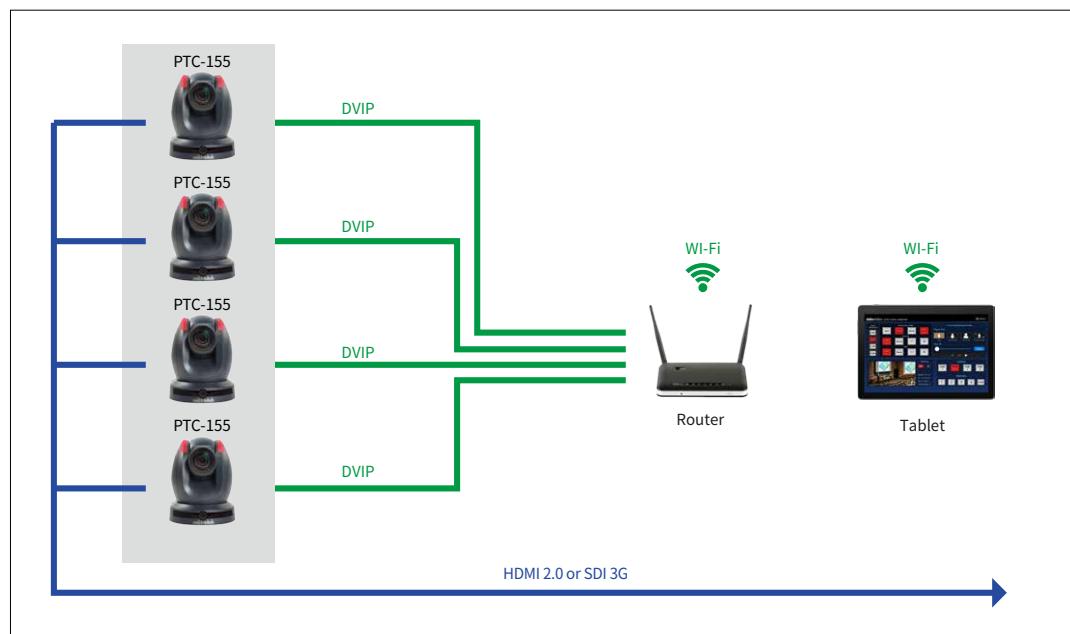
Preset Position



Can be operated via tablet and smartphone.

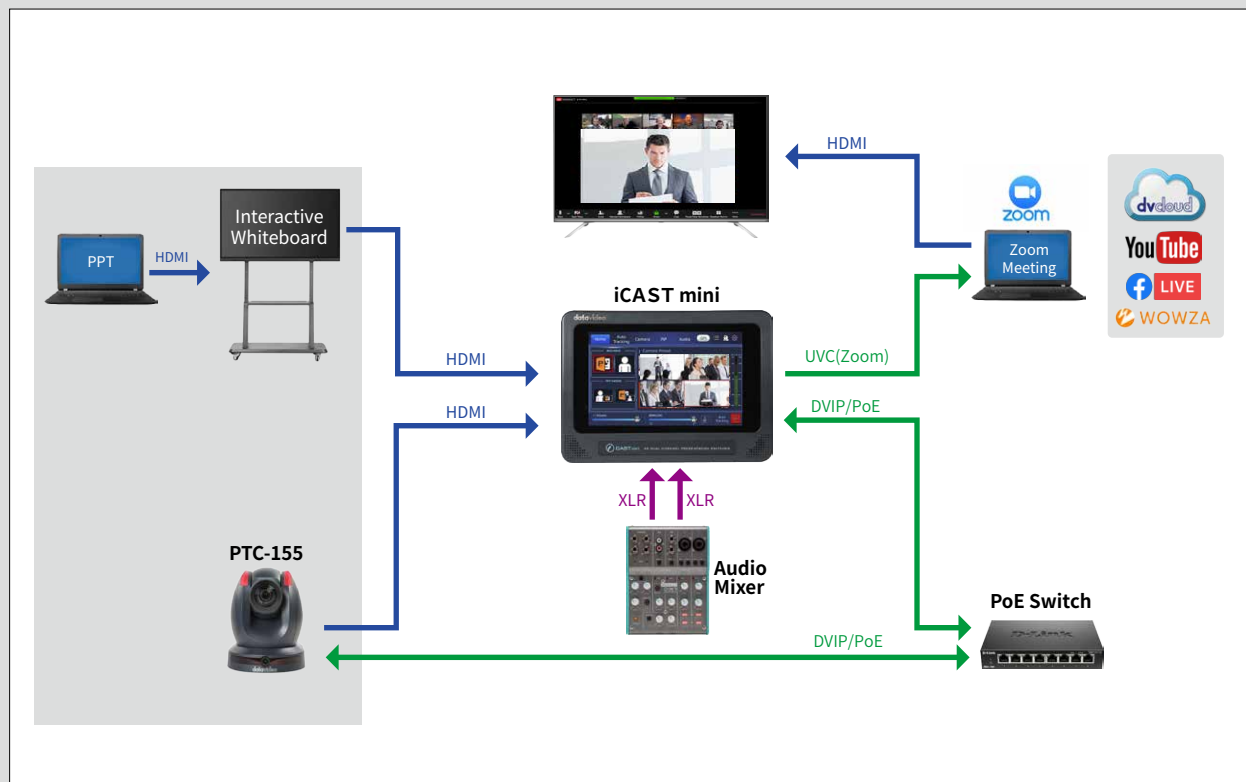


Control the Camera via Wi-Fi

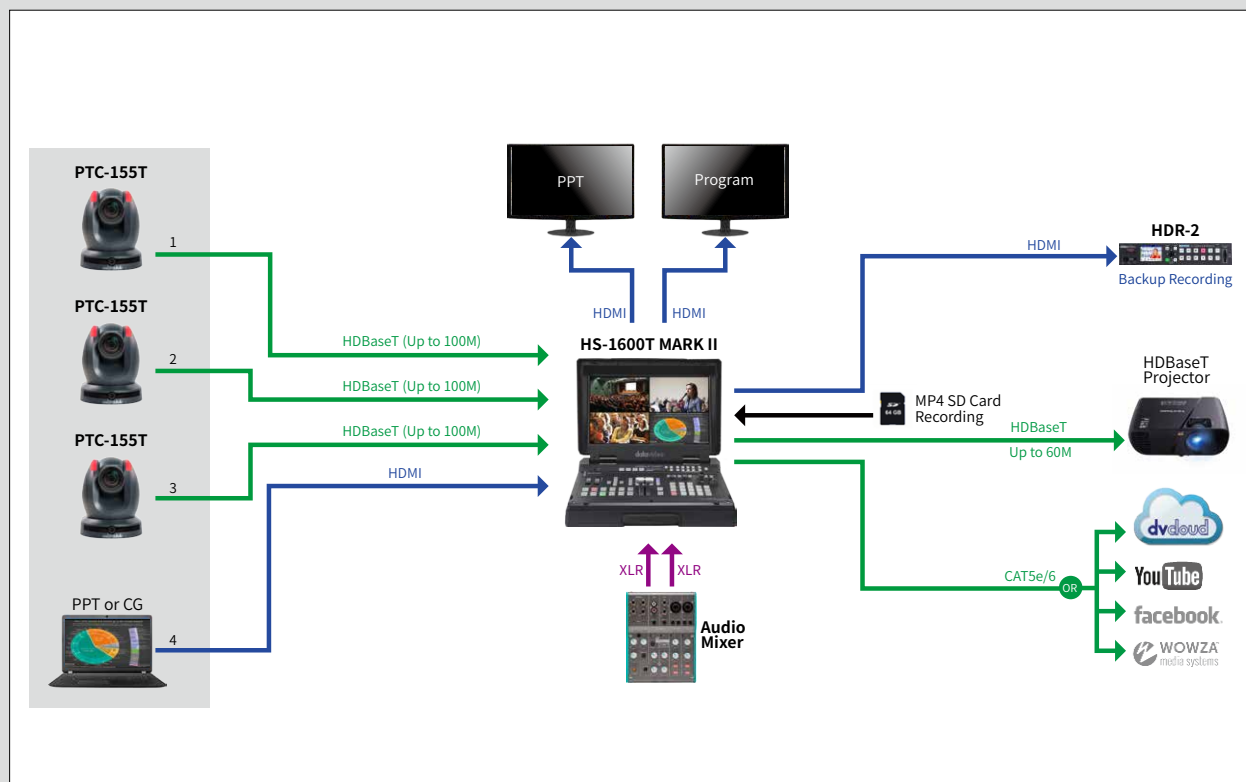


The camera control app is able to control datavideo PTZ cameras. Once you install the app on the tablet, it is easy to control the cameras in the same network!

PTC-155



PTC-155T



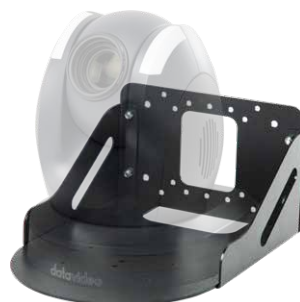
Optional accessories



D2-BASE-EXT
Camera Housing for Datavideo PTZ Camera



VP-929
HDMI 4K Repeater



WM-1
Wall Mount



WM-1W
Wall Mount (White)

The WM-1 can be positioned upside-down or rightside-up to suit various applications. The three-piece design is sturdy, and easy to install onto any wall.

What's in the box accessories



RMC-1AT
IR remote control

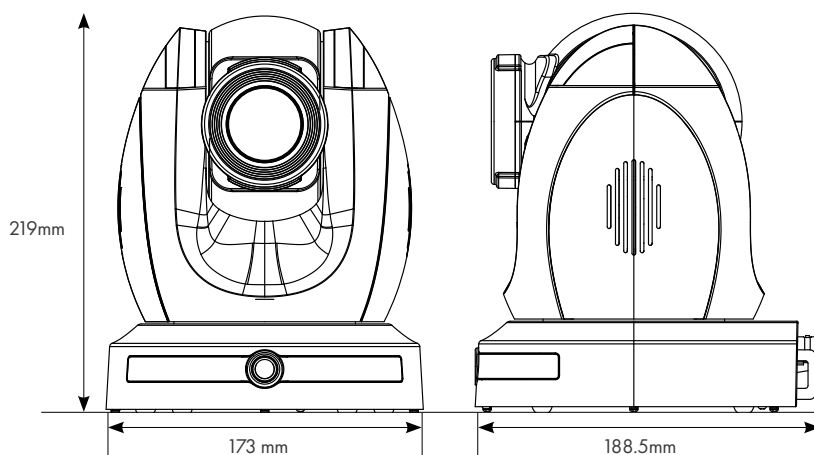


Ceiling mount bracket



DC 12V Adaptor

Dimension



Specification

NDI HX3

HDBaseT

	PTC-155	PTC-155T
Product Name	HD 30x Tracking PTZ Camera	HD HDBaseT 30x Tracking PTZ Camera
Video format/Resolution	1080p60/59.94/50/30/29.97/25 720p60/59.94/50	1080p60/59.94/50/30/29.97/25 720p60/59.94/50
Image Sensor	1/2.8" CMOS	1/2.8" CMOS
Effective Pixels (approx.)	2.14 Mega pixels	2.14 Mega pixels
S/N Ratio	≥50dB	≥50dB
Min. Illumination	0.5 Lux @ (F1.8, AGC ON)	0.5 Lux @ (F1.8, AGC ON)
Electronic Shutter	1/25s ~ 1/10000s	1/25s ~ 1/10000s
Zoom Ratio	30x Optical Zoom, 16x Digital Zoom	30x Optical Zoom, 16x Digital Zoom
Effective Zoom Ratio	27.35x	27.35x
Iris Control	Auto / Manual	Auto / Manual
Digital Noise Reductions	2D/3D	2D/3D
On-Screen Display (OSD)	English/Simplified Chinese	English/Simplified Chinese
White Balance	Auto, OnePush, Manual	Auto, OnePush, Manual
AGC / Gain Control	Yes	Yes
Mirror / Flip Image	Yes	Yes
Focus Mode	Auto/Manual	Auto/Manual
Panning / Tilting Range	Pan: 300° Tilt: +130° to -15°	Pan: 300° Tilt: +130° to -15°
Panning / Tilting Speed	Pan: 0.1~ 60°/Sec Tilt: 0.1° to 30°/Sec	Pan: 0.1~ 60°/Sec Tilt: 0.1° to 30°/Sec
Preset	255 Position	255 Position
Focal Length	f = 5.5mm (wide) to 150.43 mm (tele) F1.66(Wide) ~ F4.99 (Tele)	f = 5.5mm (wide) to 150.43 mm (tele) F1.66(Wide) ~ F4.99 (Tele)
Field of View (Horizontal, Wide)	54°	54°
Image Compensation	Back light compensation	Back light compensation
Video Output	HDMI 1.3 x1 3G-SDI x1 UVC output x1 10/100M RJ45 (PoE) x1	HDMI 1.3 x1 3G-SDI x1 UVC output x1 10/100M RJ45 (PoE) x1 HDBaseT (PoE) x1
Audio Input	3.5mm x1 (line in/mic in)	3.5mm x1 (line in/mic in)
Tally LED	Yes	Yes
Control Protocol	Pelco-D, Pelco-P, VISCA, VISCA over IP, NDI, DVIP, ONVIF	Pelco-D, Pelco-P, VISCA, VISCA over IP, DVIP, ONVIF
Remote Control Interface	IR, Web UI, RS-422/RS-232 (RJ-45), DVIP, NDI	IR, Web UI, RS-422/RS-232 (RJ-45), DVIP, HDBaseT(RJ-45)
Video Compression Format	H.264/H.265/MJPEG	H.264/H.265/MJPEG
Audio Compression Format	AAC, G711	AAC, G711
Audio Bitrate	96Kbps, 128Kbps	96Kbps, 128Kbps
Streaming Protocols	RTSP, RTMP(S), ONVIF, Multicast, SRT, NDI Hx3	RTSP, RTMP(S), ONVIF, Multicast, SRT,
First Stream Supported Resolution	1920x1080, 1280x720, 1024x576 960x540, 640x480, 640x360	1920x1080, 1280x720, 1024x576 960x540, 640x480, 640x360
Second Stream Supported Resolution	720x480, 640x360, 640x480, 320x240	720x480, 640x360, 640x480, 320x240
Video Bitrate	32Kbps ~ 20Mbps (First Stream) 32Kbps ~ 5Mbps (Second Stream)	32Kbps ~ 20Mbps (First Stream) 32Kbps ~ 5Mbps (Second Stream)
Video Bitrate Mode	VBR, CBR	VBR, CBR
Encoding Frame rate	50Hz: 1-50fps 60Hz: 1-60fps	50Hz: 1-50fps 60Hz: 1-60fps
POE	IEEE 802.3at	IEEE 802.3at
F/W Update	Via Web UI	Via Web UI
IR Control	Yes	Yes
Camera Control Unit	RMC-2P RMC-180 series/ RMC-300 series/ PTZ View Assist APP	HS-1650T/HS-1600T Mark II/RMC-2P/RMC-180 series/RMC-300 series/PTZ View Assist APP
Tripod Mount	1/4-20 UNC	1/4-20 UNC
Optional Accessories	WM-1/ WM-10/ WM-11	WM-1/ WM-10/ WM-11
Color	Dark Blue/White	Dark Blue/White
Dimension (LxWxH)	173 (W) x 219 (H) x 189.08 (D)	173 (W) x 219 (H) x 189.08 (D)
Weight	2.7 kg	2.8 kg
Operating Temp. Range	0~40 °C	0~40 °C
Power	DC 12V 19W	DC 12V 19W

[illegible]



@DatavideoUSA
@DatavideoEMEA
@DatavideoTaiwan

@DatavideoAsia
@DatavideoIndia2016
@Datavideojapan



@Datavideo
@Datavideo_EMEA
@Datavideo_Taiwan



@DatavideoUSA
@DVTWDVCN



@DatavideoUSA
@DatavideoEurope

Disclaimers of Product and Services

This brochure is intended as a guide only. We reserve the right to change specifications and availability without prior notice. While we strive for complete accuracy, be aware that it may contain errors and omissions. Prior to purchase, please check with your local Datavideo office or authorised distributor.

Ver.20250314